

The National Conference on
Environment and Art for Catholic Worship

Form / Reform



THEME:

Resurrection Witnesses...
From Empty Tombs to New Encounters
Biblical Stories in Conversation
with Architecture for Worship

August 1-4, 2007

Hyatt Regency Milwaukee
333 West Kilbourn Ave.
Milwaukee, Wisconsin





Resurrection Witnesses....

From Empty Tombs to New Encounters

Biblical Stories in Conversation with

Architecture for Worship

Conference Goals

To address the issues related to the building, renovation, or restoration of a worship space in light of current church documents.

To foster the local community's search for solutions to its particular problems and challenges that its space presents.

To foster collaboration among artists, architects, and local diocesan committees.

To provide a forum for education and discussion of current issues in an age of transition.

Table of Contents

| | |
|-----------------------------------|-------|
| General Information | 4-5 |
| Conference Goals | 6 |
| ACLS Information | 6 |
| Tours | 7 |
| Colloquia | 8 |
| Tuesday/Wednesday/Friday Schedule | 9-14 |
| Friday Schedule | 14-17 |
| Saturday Schedule | 17-20 |
| Acknowledgements | 21 |
| Presenter Pictures | 22-23 |
| Presenter Bios | 24-28 |
| Ballroom Floorplan | 29 |
| Exhibit Booth & Table Top Listing | 30 |
| Exhibitor List | 31-34 |
| Atrium Table Top List | 35-38 |
| Portfolios | 39 |
| Note Pages | 40-42 |
| Hotel Floorplans | 43 |



FORM/REFORM:

The National Conference on Environment and Art for Catholic Worship

FORM/REFORM is the only U.S. conference devoted to the full range of issues in architecture, environment and art for Catholic worship. Held in different parts of the country, the conference attracts architects, artists, liturgists, musicians and members of parish and diocesan building committees. Richly diverse in background, the participants at FORM/REFORM share a common dedication to shaping beautiful spaces that serve the liturgical life of the Catholic community.

FORM/REFORM is unique in the variety of activities that take place during the conference. In addition to the three major presentations, there are several extended sessions, over 40 breakout sessions, tours, specialized colloquia, artist, architect and liturgical design consultant portfolios and over 60 exhibits booths or tabletop presentations.

The general sessions will inspire us by examining 3 goals:

- ♦ New Dawn: On Orienting the House of the Church Toward the Resurrection.
- ♦ Re-Imaging Our Spaces
- ♦ Allowing Conversion

Based on our past history, we anticipate the FORM/REFORM Conference to host participants from dioceses throughout the country and from several foreign countries.

Because of the wonderful opportunities at this conference for networking and sharing ideas with all the artists, architects, liturgical design consultants and presenters, we encourage you to stay at the Hyatt Regency Milwaukee. As an additional incentive, each person staying at the conference host site will be eligible to win \$100 per night of their stay. We hope you take advantage of this and join us at the Hyatt Regency for the conference.

FORM/REFORM is registered with the AIA Continuing Education System (AIA/CES). This conference meets the AIA/CES criteria for learning credits.

We wish to thank everyone attending the conference. Please do not hesitate to approach any of us during the conference if we can be of any assistance or answer any questions. May the Lord, in whose name we gather, bless our time together!

FORM/REFORM Planning Committee

Paul Barribeau, John Buscemi, Mark Joseph Costello, Carol Frenning,
J. Philip Horigan, Ginny Temple, and Terry Wessels

GENERAL INFORMATION

Conference Registration

Please pick up your nametag, handbook, and all participant information when you arrive at the conference registration desk.

The registration desk is located on the 2nd floor of the Hyatt Regency Milwaukee

FORM/REFORM REGISTRATION DESK HOURS:

| | |
|-----------|---|
| Tuesday | 5:00 PM - 8:00 PM |
| Wednesday | 7:00 AM - 10:00 AM 4:00 PM - 8:00 PM |
| Thursday | 7:30 AM - 9:00 PM |
| Friday | 7:30 AM - 5:30 PM |
| Saturday | 7:30 AM - 4:00 PM |

Name Tags

Name tags are issued at time of registration. Please wear your name tag or have it with you at all times during the conference. Entrance to all FORM/REFORM sessions and events is by name tag only.

Complimentary Beverages

Complimentary morning coffee will be served in the area of the Exhibit Hall Ballroom AB on Thursday morning at 8:00 AM.

Complimentary beverages will be served on Thursday at 3:00 PM and on Friday at 2:30 PM in the Exhibit Hall Ballroom AB.

Meals

In order to keep the registration fees as reasonable as possible, we have not included meal functions with this conference. Therefore we encourage you to utilize the hotel's lunch and/or buffet options that the Hyatt will provide for our participants. Details on meal options will be available at the Conference Registration Desk. It is not required that you eat on site; however, in the interest of time it would benefit you to eat at the hotel during the scheduled lunches and use this opportunity to network with other conference attendees.

Restaurants

Please visit the conference registration desk to obtain information on restaurants within the Hyatt and in the surrounding area.

Taping

Due to the use of visual materials in most of the sessions, we will not be taping the sessions at the conference this year.

Tours and Off-Site Events

Wednesday morning departure times: 8:00 AM - 4:30 PM for all tours

Please board buses 30 minutes prior to the departure time at the entrance of the hotel. Please have your ticket available to give to the bus driver. Buses will leave promptly in order to keep on schedule.

Friday activities outside the Hyatt Regency

Milwaukee Art Museum

Portfolios will be showcased at the Milwaukee Art Museum on Friday, August 3rd from 8AM - 10AM. Buses will be available for transportation beginning at 7AM for those who need to set up their portfolio.

A continental breakfast will be served at the museum. No activities are scheduled at the hotel on Friday morning during this time.

The Cathedral of St John the Evangelist

Tour of The Cathedral of St John the Evangelist will be held from 10:30 - 11:30AM on Friday, August 3rd. Buses will provide transportation from the museum to the Cathedral.

All Saints Parish

A limited supply of tickets will be available at the Conference Registration Desk for those who wish to join us at the Friday, August 3rd, 6:00-9:00PM dinner, prayer service and presentation at All Saints Parish (see description on page7). **We highly recommend that you join us for this unique evening** as All Saints parish opens their doors to the FORM/REFORM Conference participants.

Evaluation

A conference evaluation form is available at the conference registration desk. Your cooperation in completing this form will be greatly appreciated.

GENERAL INFORMATION

Breakout Sessions

FORM/REFORM 2007 offers breakout sessions on a wide variety of environment and art topics. Whether you are facing a church building or renovation project, interested in continuing education in liturgy and/or environment and art, or professionally involved in serving parishes as an artist, architect, or consultant, FORM/REFORM has seminar sessions designed for you.

How to Make the Most of the Conference

You are encouraged to visit the Exhibit Hall and Table Top Displays frequently throughout the conference. This vital area offers you the opportunity to discover the many quality products and services that are available.

Networking opportunities with those in this area will be helpful to your long-range goals. You may not be looking for anything at this time, but you may need a new resource in the future. Spend time talking to those who are so willing to support this conference by offering their time for you and your questions. Consider scheduling an appointment with the exhibitors while at the conference.

Opening of the Exhibits - Table Top Displays

Following the Keynote on Wednesday evening, we will be opening the Exhibits and Table Top Displays with live music and a reception. There will be a light array of hors d'oeuvres and a cash bar. We wish to thank New Holland Church Furnishings for their co-sponsorship of this event.

Exhibits

Various artists, manufacturers, and suppliers have displays in the Exhibit Hall located in Ballroom AB and Table Top Displays located in the Atrium. You are encouraged to visit these areas often. See list on page 30. Exhibit and Table Top hours are:

| | |
|------------|---|
| Wednesday: | 8:30 PM - 10:30 PM |
| Thursday: | 8:00 AM - 5:00 PM 7:30 PM - 10:30 PM |
| Friday: | 12:30 PM - 3:30 PM |

Portfolios

The Portfolios will be held on Friday Morning from 8:00 AM - 10:00 AM at the Milwaukee Art Museum. A continental breakfast will be served at this event. Transportation will be provided to and from the hotel, the museum and the Cathedral for the Friday morning events.

Networking Event

New this year! The Thursday Night Networking Event will be facilitated by Plunkett Raysich Architects. A networking tool will be introduced so that the evening can be a productive time for participants and service providers. Be sure to bring your business cards with you to the event! There will be a light array of hors d'oeuvres and a cash bar. We wish to thank Plunkett Raysich Architects for their co-sponsorship of this event.

Networking Rooms

A room will be available for conference participants/exhibitors to reserve for meeting needs during the conference. Please inquire at the registration desk.

Colloquia

Among the many unique features of FORM/REFORM are the special interest colloquia which are designed to promote earnest discussion about issues of on-going importance in environment and art. Unlike seminar sessions, the colloquia are devoted entirely to discussion and study among participants. This year we are fortunate to have 5 different colloquia offered at 8:00 AM on Thursday. Please check with the conference registration desk to see if further colloquia will be offered for each of the groups.

Continuing Education Credits

FORM/REFORM is pleased to offer CEU's to participants of the conference. The credits are offered from the FORM/REFORM Conference and will be sent to the address you provide. The administrative filing fee for obtaining credits is \$40, payable to the FORM/REFORM Conference via check or credit card. Please obtain the necessary forms at the registration desk.

The FORM/REFORM Conference is registered with the AIA Continuing Education System (AIA/CES) and is committed to developing quality learning activities in accordance with the AIA/CES criteria.

Architects who would like to participate in the AIA/CES, will need to follow the AIA guidelines while at the conference which includes signing the attendance sheet located in each breakout room and completed the necessary paperwork. Please bring your AIA Member # with you to complete the forms.

Conference Commitment and Goals

Knowledgeable speakers, practical resources, artist and architect portfolios, and faith-filled experiences await participants at the 2007 FORM/REFORM Conference. Designed for the ultimate benefit to participants, this four-day event will:

HELP those involved in the building, renovation or restoration of worship spaces by providing practical information on the wide range of issues involved in this task.

GATHER those with an on-going interest in spaces for worship and art for the liturgy by providing continuing education, and a forum for both individual and conference-wide sharing of conversation, information, and debate on liturgical issues facing both the local and national church.

CELEBRATE the work and vision of those artists, architects, and craftpersons who give the liturgy its visual expression by providing an opportunity for networking with others interested in art for the church.

GOALS:

- To address the issues related to the building, renovation, or restoration of a worship space in light of current church documents.
- To foster the local community's search for solutions to its particular problems and challenges that its space presents.
- To foster collaboration among artists, architects, and local and diocesan committees.
- To provide a forum for education and discussion of current issues in an age of transition.

ACLS Annual Membership Meeting

Members of the Association of Consultants for Liturgical Space (ACLS) will meet as a group prior to and during the FORM/REFORM conference. The pre-conference meeting will take place on Tuesday, July 31, 2007 from 9:00 AM - 3:00 PM with J. Glenn Murray, SJ as speaker. The topic will be: "How Firm a Foundation: The Liturgical Principles of Sacrosanctum Concilium" and "Plenty Good Room": Both Unity and Diversity in Matters Liturgical.

The annual business meeting will follow at 3:30 PM. Election of officers will be included in the meeting. The day will conclude with dinner at a local restaurant. The registration form for ACLS pre-conference meeting is located on the Conference website and was emailed to members.

Note: ACLS members are encouraged to participate in the FORM/REFORM tours taking place on Wednesday, August 1. Registration and payment for the tours is directly with FORM/REFORM. Morning Colloquia sessions during the conference will focus on Association business and topics of interest. ACLS members will receive email notification of registration form, payment and details of events.

For membership information or other questions,
contact Gale Francione, secretary for ACLS
E: galefran@lycos.com
Please see our website at www.liturgical-consultants.org

Tours

Wednesday, August 1, 2006 (8:00AM - 4:30PM: \$65.00 includes lunch)

Overview of the South Tour

- Basilica of St. Josaphat - Designated as a basilica by Pope Pius XI in 1929. It meets all requirements for a basilica designation one of which is it is to be patterned after St. Peter's in Rome. The dome copper was replaced in 1994 and the interior was renovated in 1996.
- St. Rita Parish - This new church was dedicated in October 2005. It features a radial pew layout and new furnishings and shrines many of which were created using materials from the old church altar and interior. The immersion baptismal font was created to symbolize the dying and rising experience of the "tomb"
- St. Anne Parish - This new church is the work of a newly formed parish. The parish was formed in 1998 and dedication of the new worship space was held in October 2004. The design features a contemporary style, antiphonal seating and an immersion baptismal font.
- St. Mary & St. Antonious Church - This Coptic Church was completed in 2006 and features iconic art examples and furnishings that were created in Egypt and assembled on site.

Overview of the SouthWest Tour

- St. Mary Parish - St. Mary parish is a new church that replaced a previous church that became much needed catholic education space. The new contemporary style worship space is connected to the school and was dedicated in September 2003.
- St. Martin of Tours Parish - St. Martin of Tours Parish was a result of Holy Assumption and Sacred Hearts of Jesus & Mary Parishes combining their efforts to accommodate a larger community in 1998. They celebrated their "New Tradition" at the dedication in October 2004. The original church was preserved to serve as a gathering space and is connected to the worship space by an immersion baptismal font.
- St. Elizabeth Ann Seton Parish - Created in 1980, this new parish built its original worship in 1982 and expanded it in 1989. The new worship space was dedicated in June 1999. It features antiphonal seating for more than 1000 people using chairs for flexible arrangements throughout the liturgical year. It has an immersion baptismal font and custom built liturgical furnishings.
- Immaculate Heart of Mary Parish - This parish wished to have their lower level church transformed to worship space that had more natural sunlight, better sightlines and enhanced sacramental areas. The result is a worship space that is now totally accessible to those with disabilities and welcomes parishioners with a large immersion baptismal font.

Overview of the North and West Tour

- Basilica National Shrine of Mary Help of Christians - Located on 400 wooded acres, this basilica affords visitors a view of the Milwaukee skyline on the horizon. Recently renovated, this nationally known basilica combines sacred prayer opportunities both inside and outside. Pilgrims can walk along a 1/2 mile outdoor Way of the Cross featuring 14 life-size sculptures
- Annunciation Greek Orthodox Church - One of Frank Lloyd Wright's last commissions, the church was started in spring 1959. The dome is 106 in diameter and superimposed on the floor plan of the Greek cross. It seats 1000 people. Wright's wife oversaw the construction after his death.
- Conrad Schmitt Studio - Get insights of artists as you tour this studio and see actual works being created.

Friday, August 3, 2006 (6:00PM - 9:00PM: \$45 includes dinner)

A limited amount of tickets will be available at the conference registration desk

All Saint's Parish - An Evening of HeART and Soul

All Saints Catholic Parish on the near north side of Milwaukee is extending an invitation to participants at FORM/REFORM to experience their renovated place of worship during an event filled with food, fellowship and prayer.

The evening will open with a catered dinner, followed by a prayer service accompanied by the Gospel Choir at All Saints, including storytelling by Ginny and Terry Temple and reflection. The conclusion of the evening will be a brief Case Study presentation on the renovation project. An opportunity to speak directly with artists involved in the project will follow the formal presentation.

All Saints Catholic Church is a central Milwaukee parish. The parish was formed in 1994 as a merger of nine north side Catholic churches. As a merger of many parishes located in a largely African American area of Milwaukee, the All Saints congregation embodies the diverse breadth of the body of Christ. The All Saints Choir is renown in the Milwaukee area and the Midwest for the excellence of their music.

The Parish Planning Committee worked for nearly 10 years, along with Groth Design Group, and KS Consulting, to provide a renovation for the existing worship that would capture the heart of the merged parish. Central to the renovation was transforming the rigidity of a big, white 1950's "cube" into a place filled with expression, movement and inspiration—a place where the spirit of the people can freely flow.

Colloquia

Among the many unique features of FORM/REFORM are the special interest colloquia which are designed to promote earnest discussion about issues of on-going importance in environment and art. Unlike seminar sessions, the colloquia are devoted entirely to discussion and study among participants. The colloquia and their moderators are:

Diocesan Guidance in Places for Catholic Worship

Facilitator: Rev. Thomas G. Simons

Theme: A forum for diocesan leadership in art, architecture and liturgical environment. Brings together diocesan worship office staff and their art and architecture committees, diocesan building commission members, and any leadership involved in diocesan process leading to the building, restoration or renovation of worship spaces. The forum is intended to voice common concerns, consider current issues, support each other in our mission, and to share any reflections/concerns with other church leadership.

Professional Artist Colloquia

Facilitator: David Philippart

Art from Empty Tombs

For professional artists who make their living by making their art: Come and join your peers in guided conversation. This is not a presentation. It's an opportunity for reflection, dialogue and mutual support. As an artist, at what tombs have you waited and watched-maybe fled? What new encounters has your art-process and product-given birth? Bring slides/digital images, maquettes, sketches-an actual work, if possible-- to show and discuss if you'd like.

Architect Colloquia

Moderator: Sean Reilly, AIA

Form/Reform Orientation Session. An open conversation designed to help participants get the most out of the conference. Will include a discussion of topics and concerns that could be addressed in future conferences. Handouts from the General Sessions for Clergy and Building Committees will be available and discussed to increase our mutual understanding of what is important from their perspective.

ACLS Colloquia

Facilitator: ACLS Members

ACLS members and those interested are invited to a discussion about what is currently happening in our field. What do you see as the state of liturgical consulting today? Are programs that are trying to preserve past practices having an impact on your work? What do you see happening to our future as liturgical consultants?

ACLS will meet jointly with the Professional Artist Colloquia on Friday, August 3, 2007 for a lunch meeting from 12:30-1:20 PM, please let us know if you will be attending this meeting so that the proper amount of food can be ordered.

ACLS will meet jointly with the Diocesan Guidance Colloquia during the conference. Times will be posted at the conference registration desk.

Lutheran Colloquia

Facilitator: Paul Barribeau

For Lutherans attending the FORM/REFORM Conference for the first time. The session will focus on ways to make the most out of the conference and tips on selecting sessions to attend.

TUESDAY - WEDNESDAY - THURSDAY

| DATE / TIME | EVENT |
|--|--|
| <u>Tuesday, July 31, 2007</u> | |
| 9:00 AM - 3:00 PM Crystal Room | ACLS ANNUAL MEETING |
| 3:30 PM - 5:00 PM Crystal Room | ACLS BOARD MEETING |
| 5:00 PM - 8:00 PM Solomon Foyer | CONFERENCE REGISTRATION |
| <u>Wednesday, August 1, 2007</u> | |
| 7:00 AM - 10:00 AM Solomon Foyer | CONFERENCE REGISTRATION |
| Pre-Conference Tours | OPTIONAL PRE-CONFERENCE TOURS |
| 8:00 AM - 4:30 PM | South Tour South West Tour North West Tour |
| 4:00 PM - 8:00 PM Ballroom Foyer | CONFERENCE REGISTRATION |
| 7:00 PM - 7:30 PM Ballroom CD | WELCOME - OPENING |
| 7:30 PM - 8:30 PM Ballroom CD | KEYNOTE: Gordon Lathrop New Dawn: On Orienting the House of the Church Toward the Resurrection. Ancient Christian gathering places were sometimes, even when the basilica form began to be used, called "houses of the church" and they were often "oriented" toward the east, toward the rising sun. What makes for a "house of the church" for us? And how shall our buildings be oriented? Can our meeting places also be turned toward signs of the resurrection? <i>AIA/CES Session: FR7W01- 1 hour (Pending AIA Approval)</i> |
| 8:30 PM - 10:30 PM Ballroom AB - Atrium | GRAND OPENING OF THE FORM/REFORM EXHIBITS - TABLE TOP DISPLAYS Reception and cash bar Co-sponsored by: New Holland Church Furnishing |
| <u>Thursday, August 2, 2007</u> | |
| 7:30 AM - 9:00 PM Ballroom Foyer | CONFERENCE REGISTRATION |
| 8:00 AM - 5:00 PM Ballroom AB - Atrium | EXHIBITS - TABLE TOP DISPLAYS Complimentary Coffee in the Exhibit Hall |
| 8:00 AM - 8:45 AM | COLLOQUIA |
| Executive CD | Diocesan Guidance in Places for Catholic Worship Facilitator: Rev. Thomas G. Simons Theme: A forum for diocesan leadership in art, architecture and liturgical environment. Brings together diocesan worship office staff and their art and architecture committees, diocesan building commission members, and any leadership involved in diocesan process leading to the building, restoration or renovation of worship spaces. The forum is intended to voice common concerns, consider current issues, support each other in our mission, and to share any reflections/concerns with other church leadership. |

THURSDAY

Thursday, August 2, 2007

8:00 AM - 8:45 AM

COLLOQUIA

Crystal Room

Professional Artist Colloquia

Facilitator: David Philippart

Art from Empty Tombs

For professional artists who make their living by making their art: Come and join your peers in guided conversation. This is not a presentation. It's an opportunity for reflection, dialogue and mutual support. As an artist, at what tombs have you waited and watched-maybe fled? What new encounters has your art-process and product-given birth? Bring slides/digital images, maquettes, sketches-an actual work, if possible-- to show and discuss if you'd like.

Executive AB

ACLS Colloquia

Facilitator: ACLS Members

ACLS members and those interested are invited to a discussion about what is currently happening in our field. What do you see as the state of liturgical consulting today? Are programs that are trying to preserve past practices having an impact on your work? What do you see happening to our future as liturgical consultants?

ACLS will meet jointly with the Professional Artist Colloquia on Friday, August 3, 2007 for a lunch meeting from 12:30-1:20 PM, please let us know if you will be attending this meeting so that the proper amount of food can be ordered.

ACLS will meet jointly with the Diocesan Guidance Colloquia during the conference, times will be posted at the conference registration desk.

Milwaukee AB

Architect Colloquia

Moderator: Sean Reilly, AIA

FORM/REFORM Orientation Session. An open conversation designed to help participants get the most out of the conference. Will include a discussion of topics and concerns that could be addressed in future conferences. Handouts from the General Sessions for Clergy and Building Committees will be available and discussed to increase our mutual understanding of what is important from their perspective.

Marquette

Lutheran Colloquia

Facilitator: Paul Barribeau

Designed to help first-time conference participants get the most out of the FORM/REFORM Conference, the session will review the particular needs and interests of Lutherans who are attending the conference.

9:00 AM - 9:30 AM

Ballroom CD

MORNING PRAYER

9:30 AM - 10:30 AM

Ballroom CD

KEYNOTE: Gail Ramshaw

Re-Imaging Our Spaces

It has become usual to strip worship spaces bare and to rely on nonrepresentational art to liven up our churches. In her address, Ramshaw will call for a re-imagining of worship spaces with what she terms "liturgical art," giving some examples of the most difficult belief to depict: the resurrection.

10:30 AM - 11:30 AM

Ballroom AB - Atrium

EXHIBITS - TABLE TOP DISPLAYS

Thursday, August 2, 2007

11:00 AM - 12:30 PM

BREAKOUT SESSIONS - 100's

Executive AB

Carol Frenning

**101 Parish Building Committee Process Overview-Part I
Process and Project: Starting From the Beginning**

We have a building committee, now what do we do? This three hour extended interactive session answers your basic questions and prepares parish building committee members for the journey ahead. It gives an overview of process - what happens when and who does it - and issues that are specific to building or renovating a place of worship. Resource materials contain information to review and explore later. This session will help your committee to get the most out of your FORM/REFORM experience.

Executive CD

Phil Horrigan

102 Clergy Building Process Overview

Building and Renovation: Challenges, Resources and Outcomes Part I

This extended session is intended for pastors who are, or plan to be involved in a new church building project or a major renovation of an existing church. It will provide plenty of opportunity for sharing project concerns, questions about process and parish planning, liturgical design options, relevant documents and available resources. This session is intended to address the various issues of a building or renovation project from a pastor's perspective.

Milwaukee AB

Architect Focus Group-Part I

Moderator: Sean E. Reilly, AIA

103 - Architects' General Session: Creating the Vision - The Master Plan Phase

Part 1 of this mini-retreat for architects will focus on the challenges and opportunities in the first phase of a religious project, the Master Plan. Designed to focus on how to structure a Master Plan process, programming, understanding the client's goals, questions that should be asked, conceptual responses, financing, available resources and creation of the vision. This session will be a guided conversation encouraging a sharing of participants' experiences in the Master Plan phase. Will include input from Rev. Thomas G. Simons on Diocesan documents and concerns and Marilyn Morgan of the ACLS on the role of Liturgical Consultants in the design process.

AIA/CES Session: FR7T01- 1.5 hours (Pending AIA Approval)

Ballroom CD

John Buscemi

Artist Retreat-Part I

104 NOURISHING THE SPIRIT: A retreat time for artists and those who love the liturgical arts.

This extended time invites artists and other conference participants to come together for input, reflection and conversation. Our goal is to tap the wellsprings of living water which will nourish our imagination, our work and our ministry. It is our belief that only renewed imagination and creativity will sustain us in these challenging times of service to the Church. Come share and receive.

12:30 PM - 1:30 PM

LUNCH on your own

Exhibits - Table Top Displays

1:30 PM - 3:00 PM

BREAKOUT SESSIONS - 200's

Executive AB

Carol Frenning

201 Parish Building Committee Process Overview-Part II

Process and Project: Starting From the Beginning

We have a building committee, now what do we do? This three hour extended interactive session answers your basic questions and prepares parish building committee members for the journey ahead. It gives an overview of process - what happens when and who does it - and issues that are specific to building or renovating a place of worship. Resource materials contain information to review and explore later. This session will help your committee to get the most out of your FORM/REFORM experience.

THURSDAY

Thursday, August 2, 2007

cont. 1:30 PM - 3:00 PM

Executive CD

BREAKOUT SESSIONS - 200's (cont.)

Phil Horrigan

202 Clergy Building Process Overview

Building and Renovation: Challenges, Resources and Outcomes Part II

This extended session is intended for pastors who are, or plan to be involved in a new church building project or a major renovation of an existing church. It will provide plenty of opportunity for sharing project concerns, questions about process and parish planning, liturgical design options, relevant documents and available resources. This session is intended to address the various issues of a building or renovation project from a pastor's perspective.

Milwaukee AB

Architect Focus Group-Part II

Moderator: Sean E. Reilly, AIA

203 - Architects' General: Implementing the Vision - Schematic Design through Construction Phases

Moderator: Sean E. Reilly, AIA

Part 2 of this mini-retreat for architects will focus on the challenges and opportunities in the Implementation Phase of a religious project: Schematic Design through Construction phases. How should these 5 phases be structured, how should architects interact with the parish committee and liturgical consultant, what questions should be asked, how are cost and schedule controlled, how are liturgical arts integrated into the process. The intent for this session is to have a conversation that involves to a large degree the ideas and experiences of the participants. Will include input from Dennis Fleischer, Ph.D. on music and acoustics and David Philippart, M.A. in Theology and Literature.

AIA/CES Session: FR7T02- 1.5 hours (Pending AIA Approval)

Ballroom CD

John Buscemi

Artist Retreat-Part I & Part II

204 - NOURISHING THE SPIRIT: A retreat time for artists and those who love the liturgical arts.

This extended time invites artists and other conference participants to come together for input, reflection and conversation. Our goal is to tap the wellsprings of living water which will nourish our imagination, our work and our ministry. It is our belief that only renewed imagination and creativity will sustain us in these challenging times of service to the Church. Come share and receive.

3:00 PM - 3:30 PM

Ballroom AB - Atrium

EXHIBITS - TABLE TOP DISPLAYS

Refreshments available in the Exhibit Hall

3:30 PM - 4:30 PM

BREAKOUT SESSIONS - 300's

Milwaukee B

Plunkett Raysich Architects - The James Company - Miron Construction

301 Building Visions & Futures

Description: Are you thinking of building, renovating or expanding your church or school? Join us for an informative session featuring experts in architecture, fundraising and construction. We'll present a 15-step process that has been proven to be successful in religious facility design and building projects.

AIA/CES Session: FR7T03- 1 hour (Pending AIA Approval)

Thursday, August 2, 2007
cont. 3:30 – 4:30 PM

BREAKOUT SESSIONS- 300's (cont.)

Milwaukee A

Paul Barribeau

302 Genesis: The Creation of a Font

How can the design of a font embrace theology, rite and symbol, and yet immerse deeper to unleash the power of the water and evoke the mystery of the symbol? What does it mean to be organic and how can a human-made baptistery be "natural?" How can the paradox of the baptismal mystery be embodied with the contrasts of rigid and free-flowing form? How can the limitations of material be used shape a new image of vessel?

Using the font design at All Saints Catholic Church in Milwaukee, we will explore how the design responds to the needs of Catholic liturgy and theology, to the limitations and opportunities of the architectural setting and to the unique history and faith of the parishioners. The architect and liturgical consultant will share a case study of the All Saints font and its genesis from the initial "static" placeholder on a set of concept designs for the renovation to a vibrant, expressive symbol of creative life.

AIA/CES Session: FR7T04- 1 hour (Pending AIA Approval)

Marquette

Richard Gross

303 Introduction to Stained Glass in Architecture

This program will introduce the history and role of stained glass in architecture. It will explain the use of stained glass in buildings and the impact of stained glass on the environment. Various types of applications will be explored.

AIA/CES Session: FR7T05- 1 hour (Pending AIA Approval)

Ballroom CD

Gil Ostdiek OFM

304 - Symbols of Faith

Renewal of the liturgy requires the opening up of our symbols, especially the fundamental ones of bread and wine, water, oil. This workshop will include a guided experience of these symbols, reflection on how they express our stories and hopes, and ideas on how to open them up for the assembly. Limited to the first 60 people that register for this session.

Crystal Room

Rev. Thomas G. Simons

305 - One Church, Many Spaces: Auxiliary Church Spaces

A session that will look at auxiliary places and spaces for gathering, prayer, worship and preparation for the liturgy. These include spaces for: catechumenal dismissal, reconciliation chapel, Children's Liturgy of the Word, devotional areas, sacristies, and other spaces/areas that often get forgotten/neglected in building or renovation plans.

Executive CD

Claire Wing

306 The Building Committee and the Artist: Mission, Collaboration, and Process

In commissioned works of sacred art, the Client (Building Committee) and the Artist work together to put flesh around the great stories and mysteries of our Faith Tradition. This session will explore what this work calls forth in us, share examples of sacred imagery, and suggest fundamentals for a workable Process to help the Client communicate to the artist their vision for works of sacred art which will inspire and endure through generations.

Executive AB

Roberto Chiotti, AIA

307- Greening Sacred Space: Transforming Communities

Reflecting the eco-theology of Father Thomas Berry, Larkin Architect Limited established a new typology for Christian worship in the design of St. Gabriel's Passionist Parish. This LEED® Gold Certified church reminds us that when we gather to worship, we do so within the greater context of creation.

AIA/CES Session: FR7T06 - 1 hour- HSW (Pending AIA Approval)

THURSDAY - FRIDAY

Thursday, August 2, 2007

4:30PM - 5:00 PM

EXHIBITS - TABLE TOP DISPLAYS
(areas close from 5:00 PM - 7:30 PM)

5:00 PM - 7:30 PM

DINNER - on your own

7:30 PM - 10:30 PM
Ballroom CD

NETWORKING EVENT
FEATURING EXHIBITS - TABLE TOP DISPLAYS
Reception and cash bar
Facilitation and Co-sponsored by: Plunkett Raysich Architects

Friday, August 3, 2007

7:30 AM - 5:30 PM
Ballroom Foyer

CONFERENCE REGISTRATION

8:00 AM - 10:00 AM
Off Site

PORTFOLIO EVENT - Milwaukee Art Museum

10:30 AM - 11:30 AM
Off Site

BREAKOUT SESSION- 400's

400 Case Study - Tour of the Cathedral of St John the Evangelist

Milwaukee's Cathedral of St. John the Evangelist was renovated by Archbishop Rembert Weakland early in the new millennium, and represents one of the most controversial worship projects in recent memory. The removal of a 1946 tabernacle from the main worship space and it's placement in a side chapel sparked strong opposition from conservative Catholic organizations, and became a focus for debate on the future of liturgical design. The renovation was completed in 2002 without modifications to the controversial design, which has gone on to win both national and regional design awards for it's renovation of the Cathedral interior, and for it's modern addition and adaptive re-use of several other historic buildings around a new courtyard. Architect Jim Shields AIA, who worked on the Cathedral project with Liturgical Consultant Richard Vosko and Project Director Rev. Carl Last will lead the tour.
AIA/CES Session: FR7F01- 1 hour- HSW (Pending AIA Approval)

12:30 PM - 1:30 PM

LUNCH on your own
Exhibits - Table Top Displays

ACLS Colloquia with Professional Artist Colloquia - during lunch
(Pre-registration required by Thursday, August 2nd at the conferece registration desk)

1:30 PM - 2:30 PM

BREAKOUT SESSIONS- 500's

Milwaukee B

Plunkett Raysich Architects - The James Company - Miron Construction
501 Building Visions & Futures

Description: Are you thinking of building, renovating or expanding your church or school? Join us for an informative session featuring experts in architecture, fundraising and construction. We'll present a 15-step process that has been proven to be successful in religious facility design and building projects.
AIA/CES Session: FR7F02- 1 hour (Pending AIA Approval)

Milwaukee A

Val Bartlein
502 Considering the Instruments of the Church

Today, technology is impacting every aspect of our lives! This is true of worship and music as well. Acoustic pianos can be wired for sound directly into sound systems, pipe organs are being combined with digital technology to create wonderfully versatile instruments, and even vocalists are being "wired" with virtually invisible, wireless headset microphones to help them be more effective ministers to their congregations! We'll consider your situation and the options available to help you best lead the musical worship of your congregation.

Friday, August 3, 2007
cont. 1:30 PM - 2:30 PM

BREAKOUT SESSIONS- 500's (cont.)

Ballroom CD

Mark Joseph Costello
503 Art as Identity

This illustrated session is intended to show how the visual arts can relate to a particular community. In addition, truths from our theology, liturgical life and practice can feed new imagery for the church calling it to move beyond its particularity and into the wider tradition of the church. Dedication and liturgical texts will be explored. Parish identity statements as well as devotional needs identified by the parish are also a part of this conversation. Engaging these elements with artists and their visions becomes crucial in the process of selection arts for a worshipping community.

Executive AB

James Hundt, AIA and Carol Frenning
504 Building Green: Sustainable Practices for Church Building Projects

This session explores ways of building or renovating a church and its furnishings that respect the environment. Specific case studies offer models to guide your building design and decision making process. Committing to a set of values for your building project has benefits far beyond the building and those who worship there. From theological tradition and basic values embraced by a community to practical suggestions, you will find a wide range of possibilities for why and how a faith community can respond to our growing ecological crisis.

AIA/CES Session: FR7F03- 1 hour (Pending AIA Approval)

Crystal Room

Shelia McLaughlin
505 Fostering Dialogue in a Building Process: Insights from the Catholic Common Ground Initiative.

Differences of opinion and disagreements are inevitable in a church building process. The challenge for the pastor, the building committee, and/or the liturgical design consultant is how to foster constructive dialogue that can lead to consensus. Using principles of the Catholic Common Ground Initiative, this session will suggest ways to address differences so as to achieve "a common ground centered on faith in Jesus, marked by accountability to the living Catholic tradition, and ruled by a renewed spirit of civility, dialogue, generosity, and broad and serious consultation" (from "Called to Be Catholic," Cardinal Joseph Bernardin, August 12, 1996).

Executive CD

Rich Ragan
506 - Designing Worship Space Seating

This seminar will address the basics of seating and how to enhance the worship experience, maximize seating capacity, and seating functionality in both the main level of the nave and balcony by studying spacing alternatives, pew body styles, code compliance, and handicapped issues. The three basic types of pew seating will be presented; straight, vs. mitered, vs. radius, by reviewing actual case studies and pricing alternatives of all three pew body styles.

AIA/CES Session: FR7F04- 1 hour (Pending AIA Approval)

Marquette

Elizabeth Devereaux
507 - The Nuts & Bolts of Selecting and Working with A Glass Artist

This is for the church committee which is ready to form a design team for their new church. Since the development of a vision between an artist and committee has already been covered we will discuss the more practical aspects of what you need to know about selecting a glass artist, and what to expect with all the aspects of a contract to avoid costly and frustrating mistakes.

2:30 PM - 3:30 PM
Ballroom AB - Atrium

EXHIBITS - TABLE TOP DISPLAYS (conference closing of exhibits at 3:30 PM)
Refreshments available in the Exhibit Hall

FRIDAY

Friday, August 3, 2007

3:30 PM - 4:30 PM

BREAKOUT SESSIONS- 600's

Milwaukee B

Paul Jeffrey, AIA and John Sinovic (of Bahr Vermeer Haecker Architects)

601 Creating Excitement and Ownership in Your Parish's New Building Project

Participants will walk away with knowledge of how to involve parishioners throughout a building project in the most efficient, fun, and productive manner possible. Included are tips, techniques, meeting agendas, and communication tools that help to keep people informed and enthused for a building or renovation project. Case studies show how its done, what the results are, and how the process works from start to finish, with photos of meetings, forms, tools, models and the completed projects.

AIA/CES Session: FR7F05- 1 hour (Pending AIA Approval)

Crystal Room

Dennis Fleisher

602 Acoustics for Liturgical Spaces

Covering all elements of acoustical design for new construction and renovations such as appropriate natural acoustics to encourage full, conscious, and active participation, sound isolation, HVAC noise control, music ministry space planning with attention to directives and recommendations in CSL and BLS.

AIA/CES Session: FR7F06- 1 hour (Pending AIA Approval)

Marquette

E.J. Potente and Dennis Horbinski

603 Listening to the Voices - Facilitating Liturgical Consultation

Who speaks to us in the visioning of the building and renovation process? How do we listen? Who are the other partners in this process? How does formation of the committee and parish play a part in the creation of the "vision?" Who are liturgical consultants and from what backgrounds do they come? How do they enable the process? This session will explore this all-important aspect of the building and/or renovation effort.

Executive CD

David Philippart

604 Build a House for Justice, Justly

How might we build places for worship today that are themselves signs of justic--"right relationship--with creation and community? How do we undertake the process of planning, constructing and inhabiting places for liturgy in a way that is itself just? Come and explore how we might build or renovate a house for God's justice in a way that is itself just.

Milwaukee A

Edwin Rambusch

605 Weaving Light with Architecture

Light only exists because we see it; it is the most powerful tool for sensing our environment. Independent of era and technology, the visual impression of any architectural interior is completely dependent upon, and integrated by the illumination woven into its detailing, object placement, the quality and texture of their finishes. Light is an architectural element invested with life-giving power.

AIA/CES Session: FR7F07- 1 hour (Pending AIA Approval)

Executive AB

James W. Shields AIA

606 Church Building in the New Millennium: A Survey of Cutting Edge Catholic Worship Spaces

This session, led by James W. Shields AIA, will look at some of the most compelling recent Catholic Worship Spaces built in the world. From Richard Meier's Jubilee Church built in Rome, to the new Los Angeles Cathedral by Raphael Moneo, this session will trace the thinking behind the best contemporary work being built in the world today.

AIA/CES Session: FR7F08- 1 hour (Pending AIA Approval)

FRIDAY - SATURDAY

Friday, August 3, 2007

6:00 PM - 9:00 PM

Friday Evening - All Saint's Parish Dinner-Presentation-Tour
4060 N. 26th Street Milwaukee, WI 53209

An Evening of HeART and Soul

All Saints Catholic Parish on the near north side of Milwaukee is extending an invitation to participants at FORM/REFORM to experience their renovated place of worship during an event filled with food, fellowship and prayer.

The evening will open with a catered dinner, followed by a prayer service accompanied by the Gospel Choir at All Saints, including storytelling by Ginny and Terry Temple and reflection. The conclusion of the evening will be a brief Case Study presentation on the renovation project. An opportunity to speak directly with artists involved in the project will follow the formal presentation.

All Saints Catholic Church is a central Milwaukee parish. The parish was formed in 1994 as a merger of nine north side Catholic churches. As a merger of many parishes located in a largely African American area of Milwaukee, the All Saints congregation embodies the diverse breadth of the body of Christ. The All Saints Choir is renown in the Milwaukee area and the Midwest for the excellence of their music.

The Parish Planning Committee worked for nearly 10 years, along with Groth Design Group, and KS Consulting, to provide a renovation for the existing worship that would capture the heart of the merged parish. Central to the renovation was transforming the rigidity of a big, white 1950's "cube" into a place filled with expression, movement and inspiration—a place where the spirit of the people can freely flow.

AIA/CES Session: FR7F09- 1 hour-HSW (Pending AIA Approval)All Saint's Parish

A limited amount of tickets will be available at the conference registration desk for \$45.00 to cover the cost of the meal and transportation

5:00PM - Bus Transportation to All Saints Parish
6:00PM - Catered Dinner (parish building fundraiser)
7:00PM - Prayer Service and Case Study
9:00PM - Bus Transportation to the Hyatt Regency Milwaukee

Saturday, August 4, 2007

7:30 AM - 9:00 PM

Ballroom Foyer

CONFERENCE REGISTRATION

8:00 AM - 8:45 AM

COLLOQUIA (if needed)

9:00 AM - 9:30 AM

Ballroom CD

OPENING PRAYER

9:30 AM - 10:30 AM

Ballroom CD

KEYNOTE: Rev. Bryan Massingale
Allowing Conversion

10:30 AM - 11:00 AM

BREAK

SATURDAY

Saturday, August 4, 2007

11:00 AM - 12:00 PM

BREAKOUT SESSIONS - 700's

Milwaukee B

Val Bartlein

701 Building the Music Ministry of the Church

When a church community is building a new worshipping facility, it can be a very good time to evaluate what "cultures," traditions, and ministries of the church community have been working successfully versus those that might be struggling. This is especially true when more than one parish combines to build a new church home! We will explore many issues (grounded in the church documents) including:

- Creating a "mission" for your music ministry.
- Recruiting leadership and talent.
- Developing the talent that is already dedicated to the mission.
- Ministering to the ministers.

Regency A

Judy Dioszegi - Debbie Vinci

702 BANNER METHODOLOGY!

"From concept to completion"

Come join us for discussion, answers and a "hands on" workshop. We'll be questioning: . . . where ideas come from what inspires us.how to adapt to your space.how to start. . . which materials to choose. . . .how to proceed. . . .when to quit! . . .and how to finish! Working together we will find solutions and explore the possibilities!

Executive AB

James Hundt, AIA

703 Eco-Spirituality in Parish Consolidations

The subject of parish consolidation is often looked at one filled with pain and heartbreak. While this is a difficult and emotional issue, it provides an excellent opportunity for parishes and dioceses to put certain principles of eco-spirituality into practice. This presentation will address parish resource evaluation and management, sustainable solutions (such as adaptive reuse) and opportunities to reduce carbon emissions through long and short-term energy management strategies.

AIA/CES Session: FR7S01- 1 hour (HSW - Pending AIA Approval)

Executive CD

Gil Ostdiek OFM

704 The Liturgy: Before and After

Liturgy and life flow from and into each other. This session will reflect on ritual actions and prayers of the eucharist to see how the eucharist gathers up and celebrates the "liturgy of life" and then sends us back into the world to live the "liturgy after the liturgy," in a cycle of receiving and giving.

Milwaukee A

David Philippart

705 Ancient Rites in Modern Places: Part I

Celebrating Initiation in Your New or Renovated Church. How might you best celebrate the Easter Triduum, baptism and confirmation in your new or renewed church? Bring markers and copies of your floor plan—even a freehand sketch. We'll map the rites. For pastors and parish folks, but also for liturgical design consultants, who help their client communities "move in" their new/renovated space.

Crystal Room

Rev. Thomas G. Simons

706 Initiating the Church's House

This session will examine the Church's Rite of Dedication of a Church and an Altar and its use in various circumstances (eg. new church building, church renovations or restorations, school & hospital chapels, etc.). The session will focus on the main parts of the rite, preparation for the celebration, and ministries and services involved.

12:00 PM - 1:00 PM

LUNCH, on your own

Saturday, August 4, 2007

1:00 PM - 2:00 PM

BREAKOUT SESSIONS - 800's

Milwaukee A

Mark Joseph Costello

801 Merged Parish Projects - Confronting Art and Artifacts

This session will examine the theological and liturgical ingredients that shape the selection and retention of imagery for parishes. Whether newly commissioned or reused from existing spaces, the presence of imagery shapes our liturgical imagination and impacts our sense of the liturgy, God and our community. Especially in the case of consolidations, the retaining of existing elements needs careful planning to avoid turning churches into parish museums. Deciding what imagery to commission has a long lasting impact on the community. With any project, providing an overall vision of the whole, becomes formation for the entire parish. Specific programs and examples will be shown.

Regency A

Judy Dioszegi - Debbie Vinci

802 BANNER METHODOLOGY!

"From concept to completion"

Come join us for discussion, answers and a "hands on" workshop. We'll be questioning: . . . where ideas come from what inspires us.how to adapt to your space.how to start. . . which materials to choose. . . .how to proceed. . . .when to quit! . . .and how to finish! Working together we will find solutions and explore the possibilities! Visit: <http://www.jdioszegi.com/work/work.html>

Crystal Room

Dennis Fleisher

803 Music and Sound Reinforcement for Liturgical Spaces

A review of factors for incorporating music in post-Vatican-II worship spaces in the context of liturgical considerations, particularly in integrating and harmonizing the dual rolls of musicians as "ministers to" and "members of" the assembly. This session will explore architectural design challenges in providing accommodations for diverse musical styles, varied and often large musical instruments, and sound reinforcement, without detracting from the sacredness of the worship space.

AIA/CES Session: FR7S02- 1 hour (Pending AIA Approval)

Milwaukee B

J. Philip Horrigan

804 Documents, Directives, Guidelines and Resources

This session will examine some of the source documents that influence the decisions that are made in the design of new churches and the renovations of existing churches. We will discuss the difference between prescriptive documents, guidelines, common opinion and existing practices. Sources to be considered include: GIRM, Built of Living Stones, Sacramentum Caritatis and diocesan guidelines. Some questions to be considered are: are there options available for arrangements of the liturgical space? What are some of the 'difficult issues'? Is there room for creativity in design?

Executive CD

Don Neumann, M.A. and Dr. Marchita B. Mauck, Ph.D.

805 Relationships, Rituals, and Liturgical Spaces: Part I

Relationships, Rituals and Liturgical Spaces: A look at the interrelationships between rites, feasts, and celebrations, and the design of the space for worship. A "hands-on" reflection on how "form and function" serve or disrupt liturgy and communal worship.

AIA/CES Session: FR7S03- 1 hour (Pending AIA Approval)

Executive AB

James W. Shields AIA

806 Case Study: St. Anthony Catholic Church

This session will focus on a new award-winning catholic church project, St. Anthony Catholic Church in Menomonee Falls, Wisconsin, in which a small civil-war era rural church was expanded to seat over a 1000 persons. The project will be traced from it's initial planning through the design and fabrication of the liturgical furnishings. Architect James W. Shields AIA of HGA will be presenting.

AIA/CES Session: FR7S04- 1 hour (HSW - Pending AIA Approval)

SATURDAY

Saturday, August 4, 2007

2:00 PM - 2:30 PM

BREAK

2:30 PM - 3:30 PM

BREAKOUT SESSIONS - 900's

Executive AB

James Hundt, AIA

901 Site Selection Principles for New or Expanding Parishes

This session will first look at how to determine if an existing parish site can meet the future needs of the parish, including the special circumstances of urban churches. Attendees will be provided with a list of criteria to consider when looking for new or additional land. Issues such as size, location, opportunities to incorporate sustainable or "green" design principles, and zoning and environmental constraints will be reviewed as well as how to work with professionals to properly evaluate potential sites.

AIA/CES Session: FR7S05- 1 hour (HSW - Pending AIA Approval)

Executive CD

Don Neumann, M.A. and Dr. Marchita B. Mauck, Ph.D.

902 Relationships, Rituals, and Liturgical Spaces: Part II

Relationships, Rituals and Liturgical Spaces: A look at the interrelationships between rites, feasts, and celebrations, and the design of the space for worship. A "hands-on" reflection on how "form and function" serve or disrupt liturgy and communal worship.

AIA/CES Session: FR7S06- 1 hour (Pending AIA Approval)

Milwaukee A

David Philippart

903 Ancient Rites in Modern Places: Part II

Celebrating Liturgy in Your New or Renovated Church. How might you best celebrate Sunday Mass in your new or renewed church? Weddings? Anointing? Funerals? Bring markers and copies of your floor plan—even a freehand sketch. We'll make maps! For pastors and parish folks, but also for liturgical design consultants, who help their client communities "move in" their new/renovated space.

Ballroom B

Erica Granchalek and John Schuchert

905 - Enhancing Your Liturgical Space: Seasonal Use of Flowers

Seasonal and economical "growing" arrangements and compositions that include

- Longer-lasting elements
- Innovative mechanics and containers
- Compositions that honor the seasons
- Incorporating themes in a multi-cultural parish

3:30 PM - 4:00 PM

Regency CD

CLOSING PRAYER

5:15 PM

CLOSING MASS: The Cathedral of St. John the Evangelist

Acknowledgements

In gratitude to the following people who have enhanced our conference and prayer experience:

Conference Planning Committee:

Paul Barribeau
Carol Frenning

John Buscemi
J. Philip Horrigan

Mark Joseph Costello
Terry Wessels

Conference Production:

Terry Wessels and Jacki Giacone
T.M. Enterprises, A Conference Management Company
8404 Jamesport Drive
Rockford IL 61108
P: 815-332-7084 F: 815-332-3476
E: TMEnter2@aol.com Website: www.FormReformConference.com

Committee Support

Liturgy Chair

Music

Environment Team

Tour Coordinator

Registration/Hospitality

Ginny Temple

Terry Temple

Phil Horrigan, Mark Joseph Costello, Jim Gill

Dennis Horbinsk

Stella DeVenuta

A special thank you...

- to all diocesan offices that support this conference
- to our wonderful presenters who gave so much of their time and talent for your conference experience
- to all those who participated in the exhibit hall, table top displays, portfolios and/or the advertisements
- to Mark Joseph Costello for the graphics used in the conference printed materials
- to Ginny Temple for her gift of spirituality that graced our prayer services at this conference
- to Paul Hilderbrand for providing the ballroom with excellent sound at the major events and prayer services
- to the musicians, lectors, and all those who enhanced our experiences in prayer, song and celebration
- to all the volunteers who gave so generously of their time and talents for this conference
- to the Hyatt Regency Milwaukee for their hospitality and beautiful facility
- to anyone who was not listed in this acknowledgement due to oversight at the time of printing

PRESENTERS



Mark Bahr



Paul Barribeau



Val Bartlein



John Buscemi



Roberto Chiotti



Robert
Connolly



Mark Joseph
Costello



Elizabeth
Devereaux



Judy Dioszegi



Dennis
Fleisher



Carol
Frenning



Richard
Gross



Mark Herr



Dennis
Horbinski



J. Philip
Horrigan



James Hundt



Paul Jeffrey



Gordon
Lathrop



Marchita
Mauck



Bryan
Massingale



Sheila
McLaughlin



Don
Neumann



Gil Ostdiek



David
Philippart



E.J. Potente

PRESENTERS



Edwin
Rambusch



Gail
Ramshaw



Sean Reilly



John Schuchert
Erica Granchalek



James
Sheilds



Tom Simons



John Sinovic



Ginny Temple



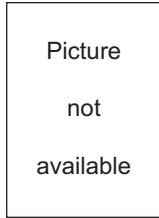
Craig
Uhlenbrauck



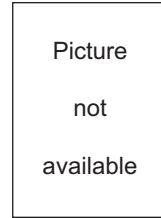
Debbie Vinci



Claire Wing



Rich Ragan



Terry Temple

PRESENTERS

Mike Bahr, Mark Herr, Robert Connolly and Craig Uhlenbrauck

Mike Bahr, AIA, Breakout Session Moderator

Architect and Project Manager, Plunkett Raysich Architects

Mark C. Herr, AIA, Partner in Charge, Plunkett Raysich Architects

Mark has over 30 years experience in religious design. He has designed master plans, expansions, interior renovations, and new buildings for church and school projects. Established in 1935, Plunkett Raysich Architects services include architectural design, interior design, master planning, space planning, feasibility studies, historic preservation, site analysis and ADA compliance. Plunkett Raysich Architects has completed over 400 religious and over 2,500 educational facilities across Wisconsin and northern Illinois. In addition, Mark has served on several church and education boards and continuously participates in state, regional and national conferences on religious architecture.

Robert J. Connolly, Principal, The James Company

Bob has worked professionally with church congregations, hospitals, schools, and social agencies since 1974. He has conducted leadership training seminars, supervised planning processes, and managed stewardship and capital fund appeals for a wide variety of nonprofit institutions. The James Company has provided a full range of development and fundraising services to more than 850 church-related institutions and raised more than \$650M in the process.

Craig Uhlenbrauck, Director of Marketing, Miron Construction Co.

Craig has over 15 years of marketing and sales experience (10 in the field of construction). In the last 10 years, Craig's focus on religious projects has afforded him the opportunity to be involved in over 85 church projects, totaling over \$200 million.

Paul Barribeau, AIA, NCARB, ACLS is a Senior Project Manager with Groth Design Group, an architectural firm in Cedarburg, Wisconsin that focuses on religious architecture. Prior to his practice of architecture, Paul was an ordained minister in the Evangelical Lutheran Church in America. Paul's primary role with Groth Design group is initial client contact, religious programming and conceptual design. Paul has a 1986 Master of Divinity from Luther Seminary in Saint Paul, Minnesota and has a 1992 Master of Architecture from the University of Wisconsin-Milwaukee.

Val Bartlein, the owner of CLASSIC CHURCH ORGANS and is now the Rodgers Instruments dealer for most of Wisconsin and Michigan's U.P. Val completed his studies in music and business (marketing) at St. Norbert College in 1985. For several years he was Director of Liturgy at Holy Family Catholic Community in Inverness, IL. In 1994, he returned to St. Norbert College as Director of Music at Old St. Joseph Church (part-time), a position he held until 2001. Today, at CLASSIC CHURCH ORGANS Val assists many congregations each year to select just the right instrument to enhance their worship, to develop the financial resources to obtain it, designs the instrument installations, and participates in the long-term training of their musicians and on-going development of their music ministries.

John Buscemi is an artist and liturgical design consultant with a studio in Albany, Wisconsin. In addition to his design work for parishes he is a frequent presenter at conferences. His main work is attempting to create intersections where liturgy, spirituality and the arts might meet.

Roberto Chiotti, B.E.S., B.Arch., M.T.S., OAA, MRAIC, LEED™ AP

In addition to obtaining his professional architectural degree in 1978, Roberto Chiotti completed his Master of Theological Studies at the University of St. Michael's College, University of Toronto, in 1998 with a specialty in Theology and Ecology obtained through the Elliott Allen Institute for Theology and Ecology at St. Michael's. In 2003, he became a LEED® (Leadership in Energy and Environmental Design) Accredited Professional. He has been a principal of Larkin Architect Limited since 1994. Currently over 75% of the firm's projects are for parishes and religious orders. Their recently completed St. Gabriel's Passionist Parish has achieved LEED® Gold Certification and is also the recipient of the 2007 City of Toronto Green Design Award.

Mark Joseph Costello is a Capuchin priest living in Chicago. He works nationally as a liturgical design consultant for parishes, religious houses, schools and hospitals. He has worked with Catholic, Lutheran, Methodist and Presbyterian congregations and is especially interested in multicultural communities. He is a graduate of the Catholic Theological Union at Chicago with a Master of Divinity Degree. He also received a Master in Fine Arts in Interior Architecture from the School of the Art Institute in Chicago.

Elizabeth Devereaux is inspired by her love of nature, the path of and qualities of light. Elizabeth Devereaux, since 1969, has brought her Christian faith and artistic skill together in architectural art glass; B.A. degrees in painting and drawing at Dominican College in San Rafael, CA, graduate work in Vienna, Austria, at the Akademie der Bildende Kunst in Munich, Germany and in Industrial Design and Religion and the Arts.

Judy Dioszegi has been designing banners since 1976. Judy studied Applied Arts at Iowa State University in Ames, Iowa, and at the American Academy of Art in Chicago, Illinois. In addition to design, Judy enjoys weaving, gardening, and being with her 8 grandchildren.

Dennis Fleisher is a native of Rochester, NY, and has served for over 25 years as a consultant and designer in acoustics, music, and sound, for over 300 projects nationwide including over 250 churches and 25 cathedrals. In 1990 his acoustics consulting firm, MuSonics, moved to the Colorado foothills and in 2005 relocated to the Midwest.

Carol Frenning is a certified liturgical design consultant and 2005 chair of the national advisory board for IFRAA-AIA (Interfaith Forum on Religion Art and Architecture which is part of the American Institute of Architects). She serves on the board for Faith and Form and convenes the Visual Arts in the Liturgy Seminar for the North American Academy of Liturgy. She is a graduate of the first class of the Institute for Liturgical Consultants at the Catholic Theological Union in Chicago, a founder and past president of ACLS (the Association of Consultants for Liturgical Space). She teaches Sacred Architecture courses at the University of Saint Thomas in St. Paul, MN.

Richard Gross has served twelve years as editor of The Stained Glass Quarterly and media director of the Stained Glass Association of America. He is the author of "Stained Glass as a Vehicle for Spiritual Growth among the Faithful in the Post-Second Vatican Council Catholic Church" (available online) and has written extensively on the role of stained glass as a liturgical art. Mr. Gross is currently pursuing a Master's degree in Pastoral Theology through Ave Maria University of Naples, Florida.

J. Philip Horrigan, is a priest of the archdiocese of Kingston, Ontario currently is the director of the architecture and art department in the Office for Divine Worship, archdiocese of Chicago. He has 35 years of pastoral experience, including that of starting a new parish and guiding its construction process.

James Hundt, AIA has been involved with the design and construction of religious facilities since 1980. Over the years, he has designed a wide variety of buildings for religious organizations and other institutional clients throughout the country. He has served as President of the Association of Consultants for Liturgical Space and Vice Chair of the Interfaith Forum on Religion, Art & Architecture (IFRAA). He has had articles and award-winning projects published in journals including Environment & Art Letter, Architectural Lighting and Ministry & Liturgy. His firm has become a leading advocate of incorporating principles of eco-spirituality into religious projects.

Paul Jeffrey, AIA and John Sinovic, AIA

Paul Jeffrey has been involved with the planning and design of religious facilities located throughout the United States



for more than 28 years. His current work includes more than \$50 million in church design for clients in California, Iowa, Nebraska, Michigan, Colorado, and Minnesota. Paul is the President of Bahr Vermeer Haecker Architects

John Sinovic is a Principal and Senior Designer with Bahr Vermeer Haecker Architects, where he provides planning and design services to Catholic and Lutheran congregations nationwide. Whether it is for design of a worship space, or master planning an entirely new religious campus, Mr. Sinovic begins each commission with an open and collaborative approach. He brings 27 years of successful experience working with Church Building Committees to share with you at the conference.

PRESENTERS

Gordon W. Lathrop is Professor of Liturgy Emeritus at the Lutheran Theological Seminary at Philadelphia. He is also currently Visiting Professor of Liturgical Studies at Yale Divinity School and the Institute of Sacred Music in New Haven, CT. A pastor of the Evangelical Lutheran Church in America, he is also the author of several books, including *The Pastor: A Spirituality* (Fortress 2006), *Holy Ground: A Liturgical Cosmology* (Fortress 2003) and *Holy Things: A Liturgical Theology* (Fortress 1993). He was a participant on two drafting committees involved in the preparation of the North American liturgical resource, *Evangelical Lutheran Worship* (2006). He has lectured widely in several countries, and participated in the work of the Faith and Order Commission of the World Council of Churches and the work of the international *Societas Liturgica*. He is an Editorial Consultant of the journal *Worship*. In 1985 he was the President of the North American Academy of Liturgy and in 2006 he received that professional organization's Berakah Award.

Rev. Bryan Massingale (S.T.D., Accademia Alphonsum, 1991), specializes in Roman Catholic moral theology with a focus on Catholic social thought, liberation theologies, African American religious ethics, and racial justice. His recent work applies Catholic social thought to the issues of affirmative action, racial reconciliation, environmental justice, and terrorism and the challenge of peacemaking. He has authored over thirty articles, book chapters, book reviews and an award-winning column for the *Catholic Press* examining contemporary social issues from a faith perspective. He is a member of the Board of Directors of the Catholic Theological Society of America and sits on the Executive Committee of the Black Catholic Theological Symposium. He has served as a theological consultant to the National Black Catholic Congress. He is a consultant to the United States Catholic Conference of Bishops, providing theological assistance on issues such as criminal justice, capital punishment, environmental justice, and affirmative action. He is currently working with the U.S. Bishops on a forthcoming pastoral statement on the sin of racism. He will present a plenary paper this fall at a Catholic scholars consultation on the environment that explores the implications of the option for the poor for environmental justice.

Sheila McLaughlin is the Director of the Joseph Bernardin Center for Theology and Ministry at Catholic Theological Union, Chicago. Formerly, she held the position of Director of the Office for Divine Worship for the Archdiocese of Chicago. Sheila holds an MA degree in Pastoral Studies from Catholic Theological Union. She is a member of the Advisory Board of the Georgetown Center for Liturgy, and the Siena Center at Dominican University. She also serves as liturgy consultant for the Catholic Health Association.

Don Neumann and Marchita Mauck

Don Neumann, M.A. in Liturgical Studies from Notre Dame University, has been a priest of the Diocese of Galveston-Houston for over 30 years, and is presently a hospital chaplain at the M.D. Anderson University of Texas Cancer Center in Houston. He also serves as a liturgical consultant on the design and renovation of Catholic churches, independently, and with Dr. Marchita B. Mauck.

Marchita B. Mauck, Professor Medieval Art, Ph.D., Tulane University. A specialist in medieval art and liturgy, Prof. Mauck has published widely on topics relating to medieval art and its liturgical context. She is the author of two books on contemporary church architecture and is in great demand as a liturgical consultant on church design throughout the country. She has recently won national and international design awards, has presented papers at national and international conferences on church design, and is working on a book on the history of church design from the perspective of art and liturgy. Prof. Mauck currently serves as Associate Dean of the College of Art and Design.

Gil Ostdiek OFM, is a Professor of Liturgy, Catholic Theological Union, Chicago, Illinois. Co-Director of the Institute for Liturgical Consultants. Recipient of the 1998 Michael Mathis Award from the Notre Dame Center for Pastoral Liturgy for contributions to pastoral liturgy. S.T.D., Pontifical Athenaeum Antonianum, Rome, Italy.

David Philippart writes about and teaches liturgy from Chicago. He's the liturgy director for St. Nicholas Church, Evanston.

E.J. Potente and Dennis Horbinski

E.J. Potente is a liturgical space consultant with 30 years of experience in working with clients in developing plans for renovations and additions to worship facilities. He is currently the president of the Studios of Potente, Inc. a liturgical arts firm, furniture builders and stained glass studios located in Kenosha, WI. E.J. is a graduate of the University of Wisconsin and certificate holder of the Institute for Liturgical consultants, Chicago, IL and a member of the Interfaith Forum on Religion, Art, and Architecture. Having been responsible for over 300 projects in his career, Potente has worked throughout 26 states in churches of a number of different denominations, hospital and school chapels. He is currently the co-author of *Shaping Worship Space, How Christians Shelter and Adorn their Liturgies: A Congregational Planning Guide*.

Dennis Horbinski is a liturgical design consultant focused on the importance of a process with a long term visioning, formation and collaboration at its core. Dennis was certified as having successfully completed coursework by The Catholic Theological Union - Chicago Institute for Liturgical Consultants. He also has been a licensed architect for 34 years having graduated from the University of Illinois School of Architecture (BA) 1970. He has lead or participated in the more than 70 religious projects of various sizes by providing a comprehensive liturgical process, education, liturgical furnishing and baptismal font design as well as architectural design and coordination. Dennis has been a national board member of the Association of Consultants for Liturgical Space. He is president of the Horbinski Design Group and recently formed a new collaborative effort, "Forms of Faith", to better serve the growing needs of religious communities.

Rich Ragan is the Director of Marketing and Sales for New Holland Church Furniture based in New Holland (Lancaster County) PA. In addition to Richard's marketing and sales management responsibilities Richard also sells the product for New Holland Church Furniture in Maryland, Washington, DC, and Virginia. Prior to Richards's employment with New Holland Church Furniture he spent 13 years as marketing and sales director for a local general contracting firm in Southeastern PA that specialized in church facility design and construction. During this time Richard lead the team in designing and building 62 worship facilities. Richard is committed to illustrating why the seating in a facility is a major component since the seating is one of the first elements of the space that people see and the first thing that people experience when entering the facility.

Edwin P. Rambusch is President of Rambusch Lighting and Decorating, Inc. Working alongside his brother Martin, Edwin serves as Project Manager, placing his emphasis on custom and restoration projects. He received his Bachelor of Fine Arts from Bates College, and a Masters in Lighting Design from the Parsons School of Design / The New School in 1994. He is a member of the DLF and IESNA, where he serves on the Progress Committee.

Dr. Gail Ramshaw is a scholar of liturgical language. A graduate of Valparaiso University (BA), Sarah Lawrence College (MA), the University of Wisconsin—Madison (PhD) and Union Theological Seminary (MDiv), Dr. Ramshaw lives in Philadelphia and is professor of religion at La Salle University. A Lutheran laywoman, she is a past president of the North American Academy of Liturgy and a member of Societas Liturgica. Ramshaw has published numerous books on the meaning of liturgical language.

Sean Reilly, AIA is a principal at Kerns Group Architects in Virginia, an architectural firm that has had a special emphasis on the design of religious projects since 1984. Sean has been actively involved in the design and construction of religious projects for many faiths in Florida, Virginia, Maryland, District of Columbia, New York, Ohio and North Carolina. He serves on the board of Envision Church. Sean and his family belong to Our Lady of Good Counsel Catholic Church where he is a catechist for 7th graders.

John Schuchert and Erica Granchalek are Co-Chairs of the Art and Environment Committee at St. Nicholas Church in Evanston, Illinois. They are committed to enhancing the liturgical space, honoring the demographics of the very diverse parish with the inspiration and help of forty dedicated volunteers.

PRESENTERS

James W. Shields AIA is a lead design architect with HGA Architects of Milwaukee, where his worship work has been honored by regional and national design awards. Mr. Shields is also an Associate Professor of Architecture at the University of Wisconsin-Milwaukee. His recent built projects have been featured in both *God's House is Our House: Re-Imagining the Environment for Worship* by Richard Vosko, and *Architecture for the Gods: Book II* by Michael J. Crosbie.

Rev. Thomas G. Simons, is the Pastor, St. Francis de Sales Parish, Muskegon, Michigan. Consultant, Diocesan Art and Architecture Committee. Former Founding Director, Office for Worship, Diocese of Grand Rapids. Author of *The Ministry of the Liturgical Environment*; *Holy People, Holy Place*; *Blessings: A Reappraisal*; and *Blessings for God's People*; and is completing a book for publication on places for reconciliation. M.A., University of Notre Dame.

Ginny Temple is liturgy trained at Corpus Christi Center for Liturgical Studies, Arizona. Specializes in dance and ritual movement. Co-creator and performer in "Sisters In Christ", song, dance and storytelling that explores women's spirituality. Children's Worship Coordinator at Our Lady of Perpetual Help, Scottsdale, AZ. Currently serving on the L.A. Congress opening event and liturgy teams.

Claire Wing, owner of Claire M. Wing Liturgical Glass + + + Arts. Liturgical Artist / Designer, Dallas, Texas. Working nationally in both leaded glass and sandblast carved relief sculpture, and the design of devotional shrines, liturgical items and furnishings.

Exhibit - Table Top Display hours:

Wednesday: 8:30 PM - 10:30 PM

**Thursday: 8:00 AM - 5:00 PM
7:30 PM - 10:30 PM**

Friday: 12:30 AM - 3:30 PM

Exhibit Hall Floorplan

**Form/Reform Conference
August 1-4, 2007
Hyatt Milwaukee
Ballroom A - B**

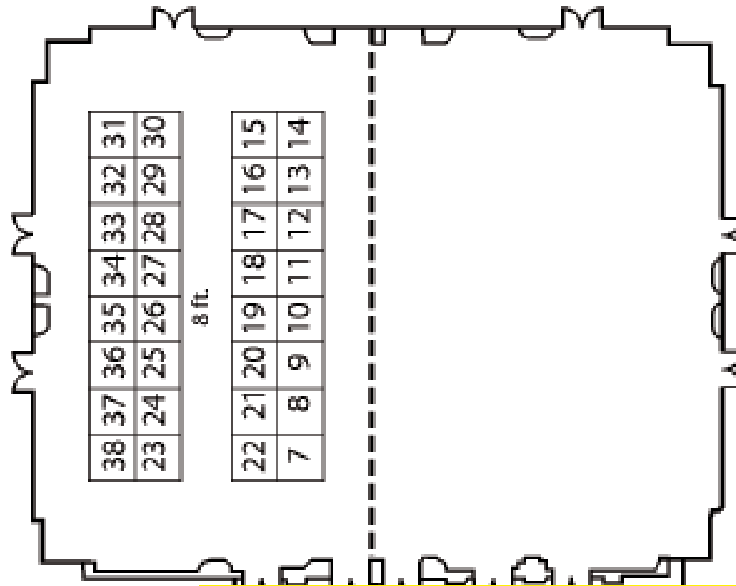
Table Top Displays are numbered with #1 on the bottom right hand side to #14 on the top right hand side.

The top left hand side starts with #15 and the bottom left hand side is #28.

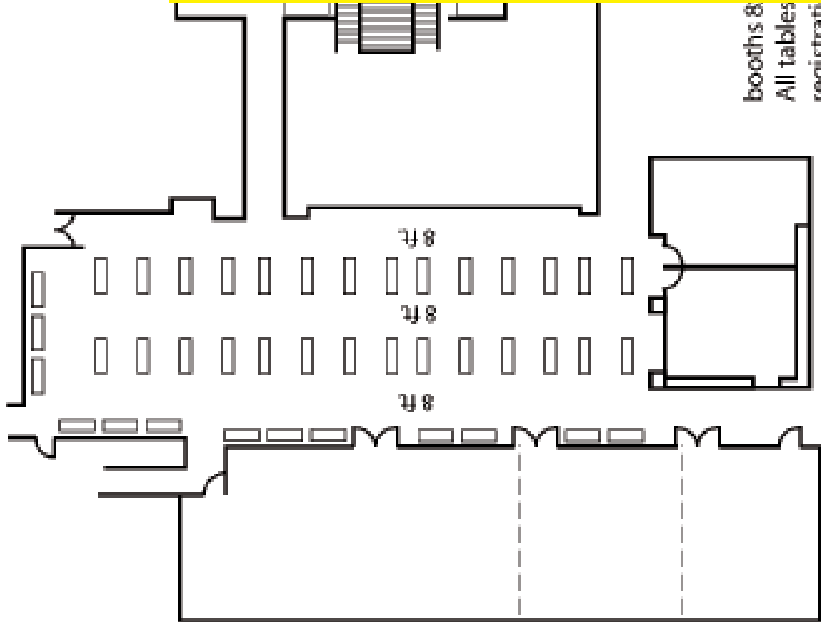
The tables that are against the walls start with #29 on the bottom of the page and proceed to #41 at the top right hand side .

32 BOOTHS IN BALLROOM A&B
6 BOOTHS IN FOYER WITH REGISTRATION

41 TABLES IN GATHERING AREA



Need this graphic - file name
FR07-floorplanA.pdf



FormPlatform.ppt
 3/20/07

EXHIBIT BOOTH AND TABLE TOP LISTING

Booths in foyer outside exhibit hall

- 1 Liturgy Training Publications
- 2 Liturgy Training Publications
- 3 Groth Design Group
- 4 New Holland Church Furniture
- 5 Liturgical Press
- 6 Liturgical Press

Jackie - I did not receive your email with additional revisions to this page. deb

Booths in exhibit hall

- | | |
|---------------------------------|--------------------------------|
| 7 Gaspard Inc. | 23 Meyer-Vogelpohl |
| 8 Marklin Candle Design | 24 Meyer-Vogelpohl |
| 9 Everest Columbarium | 25 Granda Liturgical Arts |
| 10 Bovard Studio Inc | 26 Pelerin Studios |
| 11 The Verdin Company | 27 Liturgical Environments Co. |
| 12 Kircher and Associates | 28 Watra Church Goods, Co. |
| 13 SEH Architects | 29 Lynchburg Stained Glass |
| 14 Sauder Worship Furniture | 30 Walsh and Associates |
| 15 Rambusch Decorating Company | 31 Botti Studio |
| 16 Bill Brown AIA | 32 Ratigan-Schottler |
| 17 G. R. Hoelzeman Studios | 33 Willet Hauser |
| 18 Stephen Wilson Stained Glass | 34 Harding Partners |
| 19 Pamela Hardiman | 35 Fashions by Sarah |
| 20 Conrad Schmitt Studios Inc | 36 A.J. Bellomo Studios |
| 21 Hillstream LLC | 37 BCDM Architects |
| 22 Plunkett Raysich Architects | 38 Alexei Kasantsev |

Atrium Table Top Assignments

- | | |
|--|---|
| 1 CJK Designs | 22 Saint Joseph Studio- Nancy Smith |
| 2 Architectural GlassArt Inc | 23 Lindenwood Studios |
| 3 RuckPate Architecture | 24 Richard Helgeson Furniture |
| 4 Icons by R.C Focseneanu | 25 Bobbie Carlyle Sculpture Studios |
| 5 Hanlon Sculpture Studio | 26 Mosaic Studio Aiello |
| 6 BJ Katz- Meltdown Glass Art & Design LLC | 27 Forms of Faith |
| 7 Dabeau Studio LLC | 28 Arthur Stern Studios |
| 8 Kessler Studios Inc | 29 TBD |
| 9 Shelley Kolman Smith | 30 TBD |
| 10 Morning Glory Glass Studio | 31 Filip Stuflesser |
| 11 Inspired Artisans LTD | 32 Many Values-Many Voices |
| 12 Karen Schmidt Sculpture | 33 Kirby-Smith Associates |
| 13 Claire Wing Liturgical Glass +++Arts | 34 Linda McCray |
| 14 Wiktor Szostalo Sculpture Studio | 35 Stained Glass Association of America |
| 15 Mark Eric Gulsrud Architectural Glass | 36 Campbell Art Glass |
| 16 Zeigler Capital Markets | 37 TBD |
| 17 RDG Planning & Design | 38 TBD |
| 18 Remmert Studio | 39 TBD |
| 19 JuanitaYoder | 40 TBD |
| 20 Obata Studios | 41 Jerzy Kenar, Sculptor |
| 21 Michael Kapetan Sculptor | |

EXHIBITOR LIST

A. J. Bellomo Studios/Black Forest Bldg Co.

310 Euclid
Mount Clemens MI 48043
P: (586) 954-4800 F: (586) 954-4806
E: blackfor@bignet.net
Web site: www.ajbellomostudios.com
Black Forest Building Company designs and creates spaces which relate to the surrounding architecture and accommodates the personality, lifestyle, and needs of the individual for which it is designed.

AK Sculpt Studios

6009 Maxwellton Rd
Clinton WA 98236
P: (360) 321-4311 F: (360) 321-4368
E: aksculpt@yahoo.com
Web site: www.aksulpt.com
Working primarily in marble and bronze, sculptor Alexei Kazantsev creates original works that are both sensitive and spiritually powerful. His site-specific sculptures are designed to harmonize with the surrounding architecture and to inspire the community which they serve.

Beringer Ciaccio Dennell Mabrey Architects

1015 N 98th St Ste 300
Omaha NE 68114-2334
P: (402) 391-2211 F: (402) 391-8721
E: dberinger@bcdm.net
Web site: www.bcdm.net
Religious Architecture specialists- Projects in 10 states and 14 dioceses.

Botti Studio of Architectural Arts

919 Grove St
Evanston IL 60201
P: (847) 869-5933 F: (847) 869-5996
E: Botti@bottistudio.com
Web site: www.bottistudio.com
Established in 1864, Botti Studio specializes in serving the ecclesiastical/secular environment through design, fabrication, delivery and installation. Services include: stained/faceted glass, marble, complete interiors, mosaic, consultation, historic discovery, statuary, new design commissions, painting and decorating.

Bovard Studio Inc

2281 Highway 34 East
Fairfield IA 52556-8560
P: (641) 472-2824 F: (641) 472-0974
E: info@bovardstudio.com
Web site: www.bovardstudio.com
Stained glass, new and restoration; wood, aluminum, steel frames vented for the conservation of stained glass; protective covering systems; design and engineering services; custom doors.

Bill Brown AIA PC

801 S Tejon
Colorado Springs CO 80904
P: (719) 473-8138 F: (719) 473-8157
E: billbrown@billbrownia.com
Web site: www.billbrownia.com
The firm solely serves the church around the nation as Architects, Program Planners, Master Planners, and Liturgical Design Consultants. Bill brings 29 years of experience.

Conrad Schmitt Studios Inc

2405 S 162nd St
New Berlin WI 53151
P: (800) 969-3033 F: (262) 786-9036
E: studio@conradschmitt.com
Web site: www.conradschmitt.com
Since 1889, Conrad Schmitt Studios has been providing ecclesiastical art and restoration to the worshipping community. Services include: conservation, restoration and creation of stained glass, murals, mosaics and statuary; the application of decorative painting techniques, such as gilding, glazing, marbling, stenciling and tromp l'oeil; and assistance in budget preparation and fundraising.

Everest Columbarium Systems

317 Saddlebrook Circle
Lewisville NC 27023
P: (336) 945-9096 F: (336) 945-0221
E: ever-rest@att.net
Web site: www.everestcolumbarium.com
EVEREST interlocking niches protects cremation ashes, simply, respectfully, economically and "everlastingly". The system adapts to most designs. No project is too large or too small.

Fashions by Sarah

Sarah Brogdon
2535 Rees Rd
Franklin IL 62638
P: (217) 675-2060 F: (217) 675-2078
E: fashionsbySARAH@IRtc.net
Web site: www.fashionsbysarah.com
Beautiful cutwork wall hangings and original handmade clergy stoles are offered by Fashions by Sarah. Paraments and banners are also available. Patterns and kits or complete.

G.R. Hoelzeman Studio

1 Waldhof Ln
Hattiesville AR 72063
P: (501) 669-2687 F: (603) 215-1977
E: george@grhstudios.com
Web site: www.grhstudios.com
Inspired by faith and prayer, G.R. Hoelzeman Studios seeks to create liturgical spaces and artworks that glorify God, communicate grace and inspire the spirit. We welcome the opportunity to serve your community.

EXHIBITOR LIST

Gaspard Inc

200 N Janacek Rd
Brookfield WI 53045
P: (800) 784-6800 F: (800) 784-7567
E: mail@gaspardinc.com
Web site: www.gaspardinc.com

We are pleased to offer a complete selection of paraments and religious garments, robes, stoles and more. Discover a variety of top-quality fabric choices and compelling designs.

Granda Liturgical Arts

939 W. North Ave
Chicago IL 60622
P: (312) 944-9905 F: (312) 944-9906
E: kinga@usagranda.com
Web site: www.artegranda.com

Since 1891, Granda has been at the service of sacred art designing and producing beautiful vessels, statuary, vestments, furnishings, etc., for churches world-wide. Call for a complimentary catalog

Groth Design Group Inc

N 58 W 6181 Columbia Rd
Cedarburg WI 53012
P: (262) 377-8001 F: (262) 377-0003
E: mgroth@gdg-architects.com
Web site: www.gdg-architects.com

Based in Cedarburg Wisconsin, church-related facilities specialist Groth Design Group is an architectural resource for a national clientele, particularly those requiring liturgically guided design.

Pamela T. Hardiman

20 Garden Street
Farmington CT 06032
P: (860) 676-9158 F:
E: pthardiman@earthlink.net
Web site: www.pthardiman.com

Celebrate! Renew! Rejoice! Invite the assembly to deeper participation with richly-hued handcrafted banners. Enhance your entrance with mobiles. Coordinating paraments, stoles, vestments, and palls.

Harding Partners

224 S Michigan Ave Suite 245
Chicago IL 60604
P: (312) 922-2600 F: (312) 922-8222
E: dswope@harding.com
Web site: www.harding.com

Harding Partners is a nationally recognized architectural firm specializing in religious architecture. Paul Harding is a Fellow of the American Institute of Architects.

Hillstream LLC

PO Box 121
South Salem NY 10590
P: (914) 533-5550 F: (914) 533-5552
E: jbergstrom@hillstream.com
Web site: www.hillstream.com

Hillstream LLC represents the finest in religious, corporate and public art. John Collier, sculptor and painter, has won many national awards and was chosen as the chief sculptor for the Catholic Memorial at Ground Zero in New York. Currently John is at work on projects for religious institutions in West Virginia, North Carolina, New York and Canada.

Kircher and Associates

PO Box 53, 8321 Costilla Ave
Jaroso CO 81138
P: (719) 672-3063 F: (719) 672-3062
E: kircher@fone.net

Web site: www.kirchersculpture.com
Original sculpture in bronze from an existing portfolio or through a creative process with your parish. From wax to bronze, Lynn creates the piece that allows the stories of Christianity to take life for your parish.

Liturgical Environments Co.

10814 West Cty Hwy B
Hayward WI 54843
P: (715) 462-3097 F: (715) 462-3481
E: theresa@liturgicalenvironments.com
Web site: www.liturgicalenvironments.com

Since 1962, our goal has been to use our artistic talent to satisfy the needs and desires of the faith community. Our vast experience spans from traditional art glass (symbols, figures and Byzantine icons) to contemporary art glass styles.

Liturgical Press

St John's Abbey Box 7500
Collegeville MN 56321
P: (800) 858-5450 F: (800) 445-5899
E: sales@litpress.org
Web site: www.litpress.org

For more than 80 years Liturgical Press has been a leader in publishing liturgical, Biblical, ritual and instructional materials throughout the world. Products include the Saint John's Bible; living Liturgy; Celebrating the Eucharist mass guide; Sacred Song and Psallite'-a new collection of music inspired by the antiphons and psalms of the Roman Missal.

Liturgy Training Publications

1800 N Hermitage Ave
Chicago IL 60622
P: (773) 486-8970 F: (773) 486-5630
E: jlazzarotto@ltp.org
Web site: www.ltp.org

LTP provides materials to foster a deeper knowledge of the Catholic Church. In addition, LTP develops and provides resources in English and Spanish that encourage faith formation and growth in the spiritual life, especially in the preparation and celebration of the Sacred Liturgy.

Lynchburg Stained Glass Company

PO Box 4453
Lynchburg VA 24502
P: (434) 525-6161 F: (434) 525-6168
E: info@lynchburgstainedglass.com
Web site: www.lynchburgstainedglass.com
Full service studio specializing in custom designed stained glass windows, custom aluminum frame systems and protective glazing. Also offering expert restoration services.

Marklin Candle Design

28 Riverside Dr PO Box 182
Contoocook NH 03229
P: (603) 746-2211 F: (603) 746-2070
E: martin@marklincandle.com
Web site: www.marklincandle.com
In addition to its long-standing line of quality beeswax candles, Marklin Candle Design offers both design and fabrication of liturgical appointments. Candlesticks and Processional Crosses our specialty.

Meyer-Vogelpohl

10311 Julian Drive
Cincinnati OH 45215
P: (513) 241-1535 F: (513) 241-4454
E: jvogelpohl@mvchurchgoods.com
Web site: www.mvchurchgoods.com
Committed to enhancing the meaning and beauty of today's liturgy through both traditional and innovative designs, we offer a complete line of church goods and a full range of services with emphasis on custom work, religious art, liturgical glass, and vestments.

New Holland Church Furniture

313 Prospect St
New Holland PA 17557
P: (800) 648-9663 F: (717) 354-2481
E: rragan@newhollandwood.com
Web site: www.newhollandwood.com
As the leading producer of "custom" church furniture, the objective of New Holland Church Furniture is to enhance your worship experience. Our tag line is "If You Can Imagine It, We Can Build It."

Pelerin Studio

861 Spruce Street
Winnetka IL 60093
P: (847) 441-9037 F:
E: montatelier@yahoo.com
Pelerin Studio creates contemporary handmade painted crucifixes for churches, chapels, rectories and homes. They are inspired by the San Damiano crucifix style from Italy.

Plunkett Raysich Architects LLP

11000 W Park Place
Milwaukee WI 53224
P: (414) 359-3060 F: (414) 359-3070
E: mherr@prarch.com
Web site: www.prarch.com
Plunkett Raysich Architects, LLP is a design firm specializing in architecture, planning, interior design and construction administration. We create inviting religious spaces that inspire people.

Rambusch Decorating Company

160 Cornelison Ave
Jersey City NJ 07304
P: (201) 333-2525 F: (201) 860-9999
E: martin@rambusch.com
Web site: www.rambusch.com
Rambusch works with clients to develop and plan for religious interiors. We will build, restore, conserve, preserve and renovate distinguished spaces.

Ratigan-Schottler

201 South Second St
Beatrice NE 68310
P: (800) 383-1000 F: (402) 223-2020
E: patrick@ratiganschottler.com
Web site: www.ratiganschottler.com
For over six decades the craftsmen of Rattigan-Schottler have been producing solid oak church furniture of unsurpassed quality made from only the finest northern grown hardwoods available.

Sauder Worship Furniture

930 W Barre Rd
Archbold OH 43502
P: (800) 537-1530 F: (419) 446-3697
E: sales@sauderworship.com (slink@sauderworship.com)
Web site: www.sauderworship.com
Sauder is America's leading manufacturer of worship furniture, including pews, chairs, chancel furniture and pew upholstery services. Visit our website for our Pew Buying Guide.

EXHIBITOR LIST

SEH Architects

421 Frenette Dr
Chippewa Falls WI 54729
P: (715) 720-6200 F: (715) 720-6300
E: gkucko@sehinc.com
Web site: www.sehinc.com

Stephen Wilson Stained Glass

1469 Laurel St
Baton Rouge LA 70802
P: (225) 343-2211 F: (225) 343-2332
E: studio@swglass.com
Web site: www.stephenwilsonstainedglass.com
Combining color, light, liturgy and Spirit since 1977. Meaningful design and quality fabrication of architectural stained glass and liturgical crosses.

The Verdin Company

444 Reading Rd
Cincinnati OH 45202
P: (800) 543-0488 F: (513) 241-1855
E: dkayse@verdin.com
Web site: www.verdin.com
The Verdin Company is the world's premier manufacturer of bells, carillons and clocks. For more than 160 years, Verdin has distinguished itself by blending innovative technology and superior customer service.

Walsh & Associates, Church Fundraising and Stewardship Specialists

1601 E Hwy 13 Suite 200
Burnsville MN 55337
P: (952) 882-9392 F: (952) 882-5270
E: info@walshfundraising.com
Web site: www.walshfundraising.com
Walsh & Associates, Church Fundraising & Stewardship Specialists, has been helping churches and church members reach new heights since 1984 with high quality, cost-effective capital campaigns and stewardship programs.

Wanner Sculpture Studio

5828 N 97th St
Milwaukee WI 53225
P: (414) 462-3569 F: (414) 462-3569
E: jordan@wannersculpturestudio.com
Web site: www.wannersculpturestudio.com
For over 35 years Wanner Sculpture Studio has been dedicated to creating unique and original figurative sculpture rooted in the contemporary European tradition. Services offered include liturgical consultation and design, figurative sculpture in all media, cast bronze baptismal fonts and liturgical and architectural features and furnishings.

Watra Church Goods, Co

4201 S Archer Ave
Chicago IL 60632
P: (773) 247-2425 F: (773) 247-2431
E: peter@watra.com
Web site: www.watra.com
Committed to realizing the liturgical ideals of the Second Vatican Council through education, consultation, original fine art, the highest quality furnishings and liturgical objects.

Willet Hauser Architectural Glass

1685 Wilkie Dr
Winona MN 55987
P: (800) 533-3960 F: (877) 495-9486
E: info@willethauser.com
Web site: www.willethauser.com
As one of the largest stained glass studios, we offer distinctive leaded or faceted windows that are unsurpassed in beauty, design and construction.

ATRIUM TABLE TOP LIST

Architectural Glass Art Inc

Kenneth vonRoenne, Jr.

815 W. Market St PO Box 4665
Louisville KY 40204-0665
P: (502) 585-5421 F: (502) 585-2808
E: info@AGAinc.com
Web site: www.AGAinc.com

Architectural Glass Art, Inc has won numerous design awards and specializes in innovative ecclesiastical commissions.

Arthur Stern Studios

1075 Jackson
Benecia CA 94510
P: (707) 745-8480 F: (707) 745-8480
E: arthur@arthurstern.com
Web site: www.arthurstern.com

From design to installation, Arthur Stern Studios is an award-winning full service art glass studio, with installations in 36 states as well as Canada, Japan & Hong Kong

Bobbie Carlyle Sculpture Studios

Bobbie Carlyle

1233 North Co. Rd 29
Loveland CO 80537
P: (970) 622-0213 F: (970) 622-9904
E: BobbieCarlyle@att.net
Web site: www.BobbieCarlyleSculpture.com

Bronze sculpture that captures the crux of the moment and the seed of the idea.

CJK Design Group

Christ Kamages

594 Howard Street Suite 401
San Francisco CA 94124
P: (415) 495-7626 F: (415) 495-2788
E: cjkamages@cjkdsgn.com mmiller@cjkdsgn.com

Campbell Art Glass

Craig Campbell

3765 Briarwood Ave
Mahtomedi MN 55115
P: (651) 426-4950
E: campbell@ties2.net
Web site: www.campbellartglass.com

Hand blown glass for custom applications, baptismal fonts, eternal flame lighting, oil vessels, communion ware.

Dabeau Studio LLC

Linda Dabeau

PO Box 2679
Tijeras NM 87059
P: (505) 286-4145 F: (505) 286-4145
E: ldabeau@swcp.com
Web site: www.ldabeau.com

I design and create site specific, one of a kind sacred art, that responds to the spiritual needs of the parish community and inspires devotion in the house of God.

Forms of Faith

Douglas Barnes

7707 Harwood Ave
Milwaukee WI 53213
P: (414) 918-1461 F: (414) 476-8582
E: doug.barnes@zastudios.com
Web site: www.Formsoffaith.com

Forms of Faith, a collaboration of professionals serving religious communities, offers an array of services including: visioning, liturgical formation, architecture, interiors, engineering, and landscape architecture.

Hanlon Sculpture Studio

Brian Hanlon

281 Rivers Edge Ln
Toms River NJ 08755
P: (732) 240-7149 F: (732) 914-8579
E: sculpt1@hotmail.com
Web site: www.hanlonsculpture.com

With over 200 public art pieces, Brian P. Hanlon has been dubbed New Jersey's Sculptor. In business since 1991, Brian runs Hanlon Sculpture with the help of his wife. In creating his work, Brian's goal is to evoke feelings in those who experience his art as well as to educate others about the subject of his sculpture.

Icons by R.C. Focsaneanu

Rodica Cunningham

10321 Sunrise Blvd
Oklahoma City OK 73120
P: (405) 751-7268
E: rodicafocsi@yahoo.com

Icons written in the old tradition of Romanian reversed glass iconography, hand-painted by the iconographers with egg-tempera and gold leaf, mounted in hand-carved frames.

Inspired Artisans LTD

Gianfranco Tassara

816 W. National Ave
Milwaukee WI 53204
P: (414) 672-9478 F: (414) 672-9479
E: gianfranco@inspiredart.com
Web site: www.inspiredart.com

Established in 1997, Inspired Artisans, Ltd. of Milwaukee is one of the few studios in America that can create and develop sculpture, mosaics and terra cotta, liturgical fitments, iconography, murals and decoration, stained, faceted and etched glass, restoration, awards and memorials and ornamental gates and screens.

ATRIUM TABLE TOP LIST

Jerzy Kenar, Sculptor

1007 15 N Wolcott
Chicago IL 60622
P: 773-342-2550
E: info@religiouskenar.com
Web site: www.religiouskenar.com
Specializing in figurative sculpture (wood and bronze), liturgical furnishings, processional crosses, Stations of the Cross and screens. Jerzy's creations are often interactive and people friendly-invited to touch, interact or even dine at the same table with a life-size Holy Family.

Michael R Kapetan, Sculptor

1625 Peach
Ann Arbor MI 48105
P: (734) 662-8824 F:
E: mike@mikekapetan.com
Web site: www.mikekapetan.com

Karen Schmidt Sculpture

Karen Schmidt

203 S. Poplar Ave.
Brea, CA 92821
P: (714) 746-2107
F: (714) 257-9697
E: karen@karenschmidtsculpture.com
Website: www.karenschmidtsculpture.com
Artistically and spiritually eloquent figurative sculpture and bas-relief, including portraits; realistic to abstract, in bronze, ceramic, cast-marble, and resin, 2006 BENE award for "Mary and Elizabeth."

B.J. Katz

Meltdown Glass Art & Design LLC

PO Box 3850
Chandler AZ 85244-3850
P: (800) 845-6221 F: (480) 633-3344
E: bjkat@meltdownglass.com
Web site: www.meltdownglass.com
Meltdown Glass studio produces all kinds of functional art glass: sculptures, art walls, water walls, room dividers, glass doors, and windows to name a few. Functional art is made on a commissioned basis for art collectors, corporations, architects, interior designers, and anyone with an eye for beauty. Fine art galleries and art consultants across the country represent my artwork.

Kessler Studios Inc

Cindy Kessler

273 East Broadway
Loveland OH 45140-2131
P: (513) 683-7500 F: (513) 683-7512
E: kessler@fuse.net
Web site: www.kesslerstudios.com
Kessler Studios creates contemporary mosaics and stained glass windows. Winners of Percent-For-Art commissions, Bene Religious Art Awards and an A.I.A Visual Art Award.

Kirby-Smith Associates

C. Eugene Musser
5 Fawn Drive
Quarryville PA 17566
P: (800) 762-3996 F: (717) 284-3659
E: kirbysmith@aol.com
Web site: www.kirbysmith.com
Kirby-Smith Associates provides spiritually-based fund-raising services to Christian churches including capital campaigns, feasibility studies. Our stewardship approach is tailored to meet your needs and budget.

Lindenwood Studios

Sergei Mitrofanov
11883 Arcola St
Livonia MI 48150
P: (734) 377-7942 F: (734) 513-2424
E: sergei@tds.net
Liturgical sculpturing and restoration.

Linda McCray

Abstract Spiritual Original Paintings

6 Park Place
Clancy MT 59634-9759
P: (800) 923-5537 F: (800) 923-5537
E: Lmccray@artmt.com
Web site: www.MontanaDesignsUnlimited.com
I hope to work closely with you and your faith community translating your mission into abstract original paintings created especially for you.

Many Values-Many Voices

Michael Boreskie

403-138 Portage Ave East
Winnipeg MB CANADA R3C0A1
P: (204) 284-5538 F: (204) 477-6769
E: mvmv@boreskie.mb.ca
Web site: www.manyvalues-manyvoices.com
Many Values - Many Voices: The 12 step Who, What, Where, When Process for Church Building Projects. A proven, successful process for parish building committees.

Mark Eric Gulrud Architectural Glass

3309 Tahoma Place West
Tacoma WA 98466
P: (253) 566-1720 F: (253) 565-5981
E: mark@markerigulrud.com
Web site: www.markerigulrud.com
Primarily site-specific, Mark Eric Gulrud's commissions range internationally and include public, corporate and liturgical environments. Media include hand blown leaded glass, cast glass, ceramic, stone and wood.

ATRIUM TABLE TOP LIST

Morning Glory Glass Studio

Rick Findora

524 Portage St
Lodi WI 53555
P: (608) 592-2021 F: (608) 592-2021
Web site: www.MorningGloryGlassStudio.com
Specializing in custom design and fabrication of stained glass and liturgical furnishings to compliment the individual worship space including Altar Screens, Tabernacles, Ambries, Crosses and Candleholders.

Mosaic Studio Aiello

Italy: Enzo Aiello

Via Campi Flegrei 59, 00141 Rome, Italy
USA: Greg Haas
7914 Burgoyne Rd
Houston TX 77063
P: (281) 772-2130 F: (713) 972-1004
E: US: ghaashome@sbcglobal.net;
E: Italy: enzoaiello@gmail.com
Web site: www.mosaicartclasses.com
Roman marble and Venetian glass mosaics by Vatican trained artists for European and US churches.

Obata Studios

Sue Obata

1 Leonard Circle
Toronto ON CANADA M4E 2Z6
P: (416) 690-0031 F:
E: mail@obatastudios.com
Web site: www.obatastudios.com
Specializing in contemporary art glass for sacred space environments. Quality in design craftsmanship, material and service.

RDG Planning and Design

900 Farnam on the Mall Suite 100
Omaha NE 68102-5089
P: (402) 392-0133 F: (402) 392-0413
E: rmilbrath@rdgusa.com
Web site: www.rdgusa.com
Award winning firm creatively influencing life for the better through purpose-driven design.

Remmert Studios, Inc.

5584 E. Anita Ave
St Anne IL 60964
P: (815) 933-4867 F: (815) 933-4867
E: info@remmertstudios.com
Web site: www.remmertstudios.com
Remmert Studios, Inc-Custom design and fabrication of fine liturgical furnishings.

Richard Helgeson Furniture

Richard Helgeson

Box 11321
Minneapolis MN 55711
P: (612) 521-1674 F: (612) 922-9006
E: rarewoods@earthlink.net
Web site: www.xylogallery.com
Maker of distinctive, handbuilt furniture original or collaborative designs and limited edition sanctuary furniture available.

Ruck/Pate Architecture

Frederick Schuster

22102 North Pepper Rd Suite 201
Barrington IL 60010
P: (847) 381-2946 F: (847) 304-1218
E: Fschuster@ruckpate.com
Web site: www.ruckpate.com

Nancy Lee Smith

Saint Joseph Studio

610 W Elm Ave
Monroe MI 48162
P: (734) 457-0018 F: (734) 457-0055
E: sjstudio@antila.net
Sister Nancy writes icons in the classic style, depicting God and the saints as Beauty. Nancy's latest work of acrylic canvas paintings shows God as a Mother, following the Syriac poetic tradition prior to 400 AD.

Shelley Kolman Smith

Flying Paint Ranch Sculpture Studio

18730 FM 1565
Poetry TX 75160
P: (214) 734-9133 F: (972) 563-9404 (call first)
E: Poetryart@aol.com
Web site: www.ShelleyKolmanSmith.com
"Celebrating God's gift with inventive thought, a sensitive eye and a delicate touch." Sculpture and Paintings; Winner 2003 BENE.

Stained Glass Association of America

10009 E 62nd Street
Raytown MO 64133
P: (800) 438-8581 F: (816) 737-2801
E: headquarters@sgaonline.com
Web site: www.stainedglass.org
The Stained Glass Association of America is a more than 100 year old non-profit trade association dedicated to the advancement and preservation of architectural stained glass. The SGAA provides the industry and public with publications designed to educate as well as preserve the history of the craft.

ATRIUM TABLE TOP LIST

Stuflessler -- Ars Sacra 1875

Filip Stuflessler

Petlin 13

Ortisei ITALIA

P: 39 0471 796163

E: info@stuflessler.com

Web site: www.stuflessler.com

For five generations of the same family of woodcarvers, we have devoted ourselves to the creation of Church Interiors, wooden sculptures and bronze statues and restoring works.

Wiktor Szostalo Sculpture Studio

4398 Chouteau

St Louis MO 63110

P: (314) 652-9720 F: (314) 534-7897

E: [wszostalo@earthlink.net](mailto:wosztalo@earthlink.net)

Web site: www.szostalosculture.com

Liturgical sculpture in bronze, welded stainless steel, cast glass and wood by world renown artist, Wiktor Szostalo.

Claire M. Wing Liturgical Glass ++Arts

1520 W Ninth St

Dallas TX 75208

P: (214) 761-9464 F: (214) 761-9464

E: clairemwing@sbcglobal.net

Web site: www.clairewing.com

Liturgical artist/designer working nationally in both leaded glass and sandblast carved relief sculpture and the design of devotional spaces, liturgical items and furnishings.

Juanita Yoder

Painting on Silk

148 Monmouth St

Hightstown NJ 08520

P: (609) 448-5335 F:

E: Juanita@JYKArt.com

Web site: www.JYKArt.com

Suspended paintings on silk combine personal spiritual expression, liturgical and architectural considerations. 2006 BENE Award for the Stations of the Cross for St Thomas More Church in Glendale, Arizona.

Ziegler Capital Markets

Scott Rolfs

250 E Wisconsin Ave Suite 2000

Milwaukee WI 53202

P: (414) 978-6400 F: (414) 978-6575

Web site: www.zieglerloan.com

If you are looking for church financing, church refinancing, church loans or other church mortgages for expansion projects or church construction projects the church finance experts at Ziegler can help.

Portfolio List

Joseph Aspell Studio
Joseph Aspell SM
58 West Portal Ave #243
San Francisco CA 94127
P: (408) 253-3659
E: jaspell@ix.netcom.com
Web site: www.josephaspellstudio.com

Bene Bronze
Michele vandenHeuvel, LLC
7418 Pimenton Dr NE
Albuquerque NM 87113
P: (505) 344-9154 F: (505) 681-9611
E: benebronze@aol.com
Web site: www.benebronze.com

Efharisto Studio
Stephana Toomey
4 EAST Rolling Crossroads, STE 303
Catonsville MD 21228
P: (410) 719-1043 F: (410) 719-0995
E: fharisto@charm.net

Elizabeth Devereaux Architectural Glass
2468 Ivy St
Chico CA 95928
P: (530) 342-2074 F: (530) 342-2048
E: edevero@devglas.com
Web site: www.devglas.com

Kenneth J Griesemer & Associates PC
6119 Chimayo Dr NW
Albuquerque NM 87120
P: (505) 897-4926 F: (505) 897-5016
E: STFstudio@att.net

Heimsath Architects
Ben Heimsath
2108 E M Franklin Ave
Austin TX 78723
P: (512) 478-1621 F: (512) 477-7259
E: benh@heimsath.com
Web site: www.heimsath.com

HGA (Hammel Green and Abrahamson)
James Shields AIA
333 East Erie St
Milwaukee WI 53202
P: (414) 278-8200 F: (414) 278-7734
E: jshields@hga.com
Web site: www.hga.com

Judy Dioszegi Designer
1295 Margate Lane
Green Oaks IL 60048
P: (847) 367-8395 F:
E: jdiox2@aol.com
Web site: www.jdioszegi.com

Kerns Group Architects
4600 North Fairfax Dr Suite 100
Arlington VA 22203-1553
P: (703) 528-1150 F: (703) 528-1151
E: sreilly@kernsgroup.com
Web site: www.kernsgroup.com

R.W. Larson Associates
103 Gamma Dr
Pittsburgh PA 15238
P: (412) 406-5070 F: (412) 406-5067
E: wbrocius@rwl Larsonarchitects.com
Web site: www.rwl Larsonarchitects.com

Slaterpaul Architects
Lisa Jeliffe
One Park Central Suite 400
1515 Ara[hoe] Street
Denver CO 80202
P: (303) 607-0977 F: (303) 607-0677
E: ljeliffe@slaterpaul.com
Web site: www.slaterpaul.com

The Studios of Potente Inc
E. J. Potente
408 68th Street
Kenosha WI 53140
P: F: (800) 776-3585
E: info@potenteinc.com
Web site: www.potentestudios.com

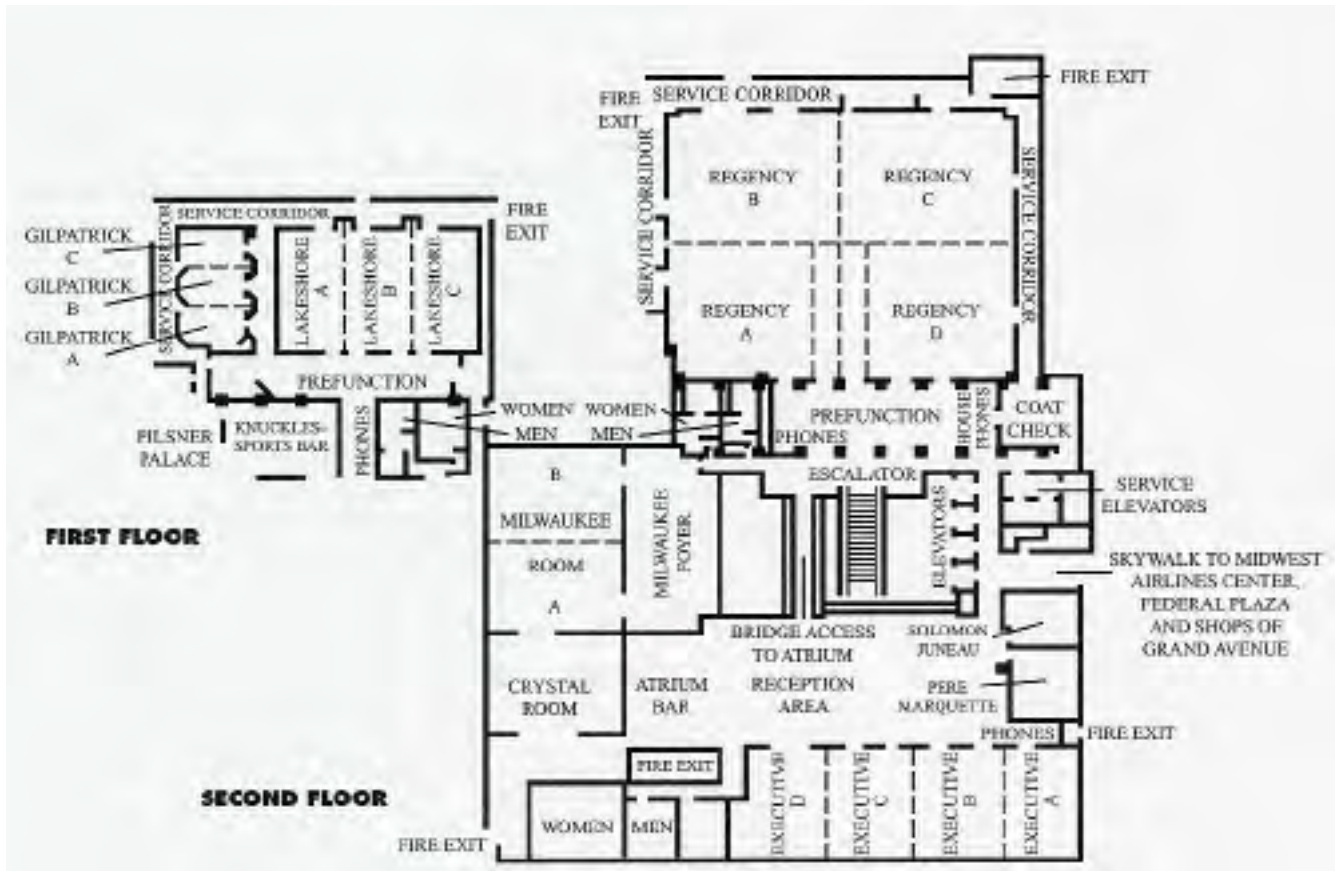
Ronald Zawilla
Genesis Studios at Watra
4201 S Archer Ave
Chicago IL 60632
P: (773) 247-2425 F: (773) 247-2431
E: ron@watra.com
Web site: www.watra.com

NOTES

NOTES

NOTES

Hotel Floorplans



ROOM USE

- Ballroom AB - Exhibits
- Atrium - Table Tops
- Ballroom CD - General Sessions - Breakout Room
- Solomon - Conference Office - Storage

2nd Floor Breakout Rooms

- Marquette
- Executive A
- Executive B
- Executive C
- Executive D
- Crystal Room
- Milwaukee A
- Milwaukee B

1st Floor Breakout Rooms

- Lakeshore A
- Lakeshore B
- Lakeshore C



FORM/REFORM:

The National Conference on Environment and Art for Catholic Worship

SCHEDULE AT A GLANCE

Tuesday, July 31, 2007

9:00 AM - 3:00 PM ACLS ANNUAL MEETING
3:30 PM - 5:00 PM ACLS BOARD MEETING
5:00 PM - 8:00 PM CONFERENCE REGISTRATION

Wednesday, August 1, 2007

7:00 AM - 10:00 AM CONFERENCE REGISTRATION
8:00 AM - 4:30 PM OPTIONAL PRE-CONFERENCE TOURS
4:00 PM - 8:00 PM CONFERENCE REGISTRATION
7:00 PM - 7:30 PM OPENING PRAYER - EVENT
7:30 PM - 8:30 PM KEYNOTE: Gordon Lathrop
8:30 PM-10:30 PM GRAND OPENING OF THE FORM/REFORM
EXHIBITS -TABLE TOPS - with a reception and cash bar
Co-sponsored by: New Holland Church Furnishings

Thursday, August 2, 2007

7:30 AM - 9:00 PM CONFERENCE REGISTRATION
8:00 AM - 5:00 PM EXHIBITS - ATRIUM TABLE TOPS
8:00 AM - 8:45 AM COLLOQUIA / ORIENTATION
9:00 AM - 9:30 AM MORNING PRAYER
9:30 AM -10:30 AM KEYNOTE: Gail Ramshaw
10:30 AM -11:00 AM EXHIBITS - ATRIUM TABLE TOPS
11:00 AM - 12:30 PM BREAKOUT SESSIONS - #100's
12:30 PM - 1:30 PM LUNCH on your own
1:30 PM - 3:00 PM BREAKOUT SESSIONS - #200's
3:00 PM - 3:30 PM EXHIBITS - ATRIUM TABLE TOPS
3:30 PM - 4:30 PM BREAKOUT SESSIONS - #300's
4:30 PM - 5:00 PM EXHIBITS - ATRIUM TABLE TOPS
5:00 PM - 7:30 PM Dinner on your own
7:30 PM-10:30PM NETWORKING EVENT & RECEPTION
EXHIBITS -TABLE TOPS - with a reception and cash bar
Co-sponsored by: Plunkett Raysich Architects

Friday, August 3, 2007

7:30 AM - 5:30 PM CONFERENCE REGISTRATION
8:00 AM - 10:00 AM PORTFOLIOS at the Milwaukee Art Museum
10:30 AM - 11:30 AM SESSION 400 TOUR: Cathedral of St John the Evangelist
12:30 PM - 3:30 PM EXHIBITS - ATRIUM TABLE TOPS
12:30 PM - 1:30 PM LUNCH on your own
1:30 PM - 2:30 PM BREAKOUT SESSIONS - #500's
2:30 PM - 3:30 PM EXHIBITS - ATRIUM TABLE TOPS (3:30PM Closing)
3:30 PM - 4:30 PM BREAKOUT SESSIONS - #600's
6:00 PM - 9:00 PM RECOMMENDED: ALL SAINTS DINNER AND TOUR

Saturday, August 4, 2007

7:30 AM - 4:00 PM CONFERENCE REGISTRATION
8:00 AM - 8:45 AM COLLOQUIA (if needed)
9:00 AM - 9:30 AM MORNING PRAYER
9:30 AM -10:30 AM KEYNOTE: Rev Bryan Massingale
10:30 AM - 11:00 AM BREAK
11:00 AM - 12:00 PM BREAKOUT SESSIONS - #700's
12:00 PM - 1:00 PM LUNCH on your own
1:00 PM - 2:00 PM BREAKOUT SESSIONS - #800's
2:00 PM - 2:30 PM BREAK
2:30 PM - 3:30 PM BREAKOUT SESSIONS - #900's
3:30 PM - 4:00 PM CLOSING PRAYER
5:15 PM MASS at the Cathedral of St John the Evangelist